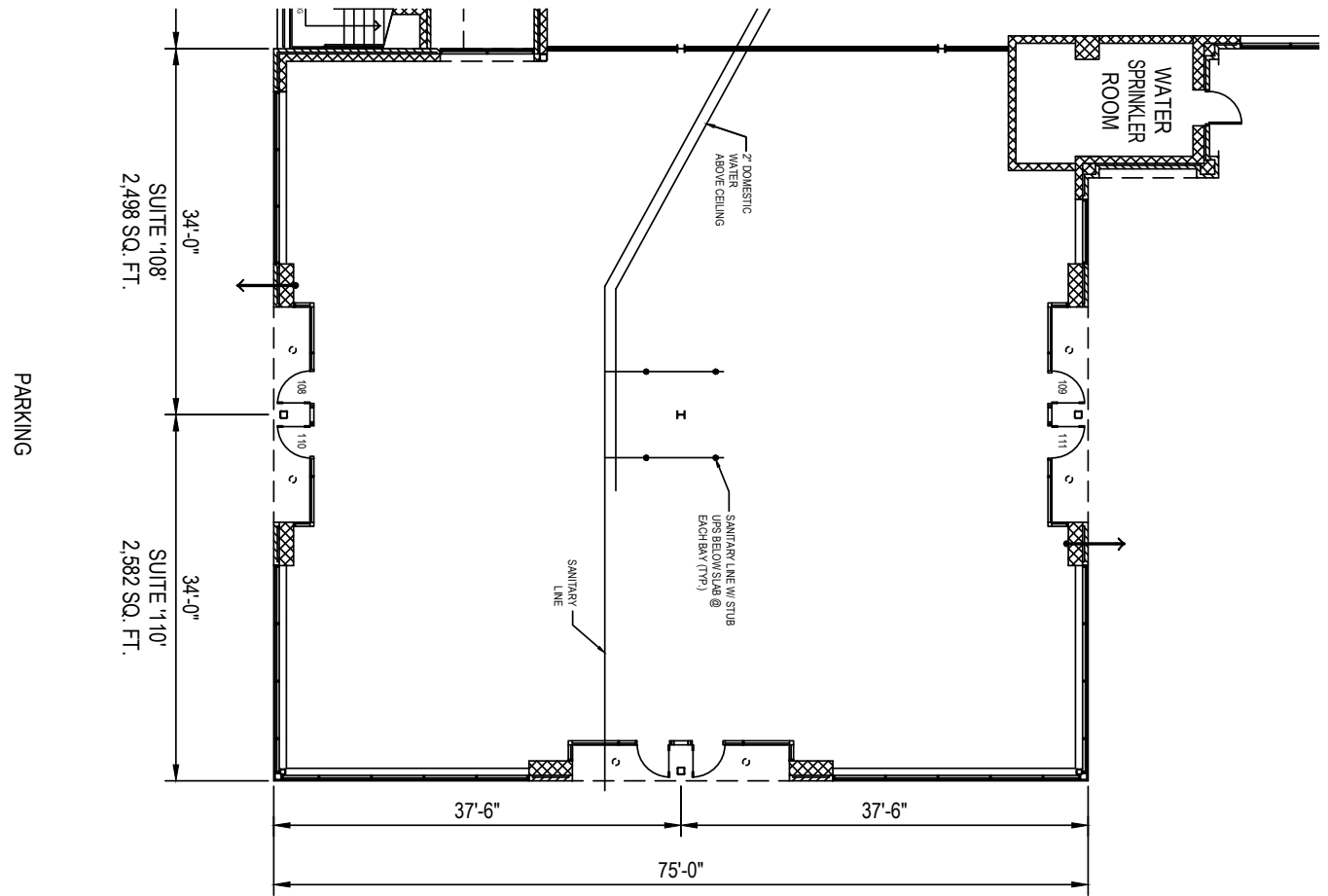
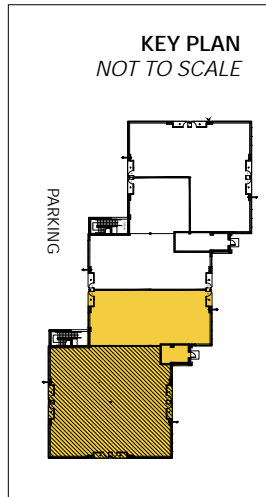
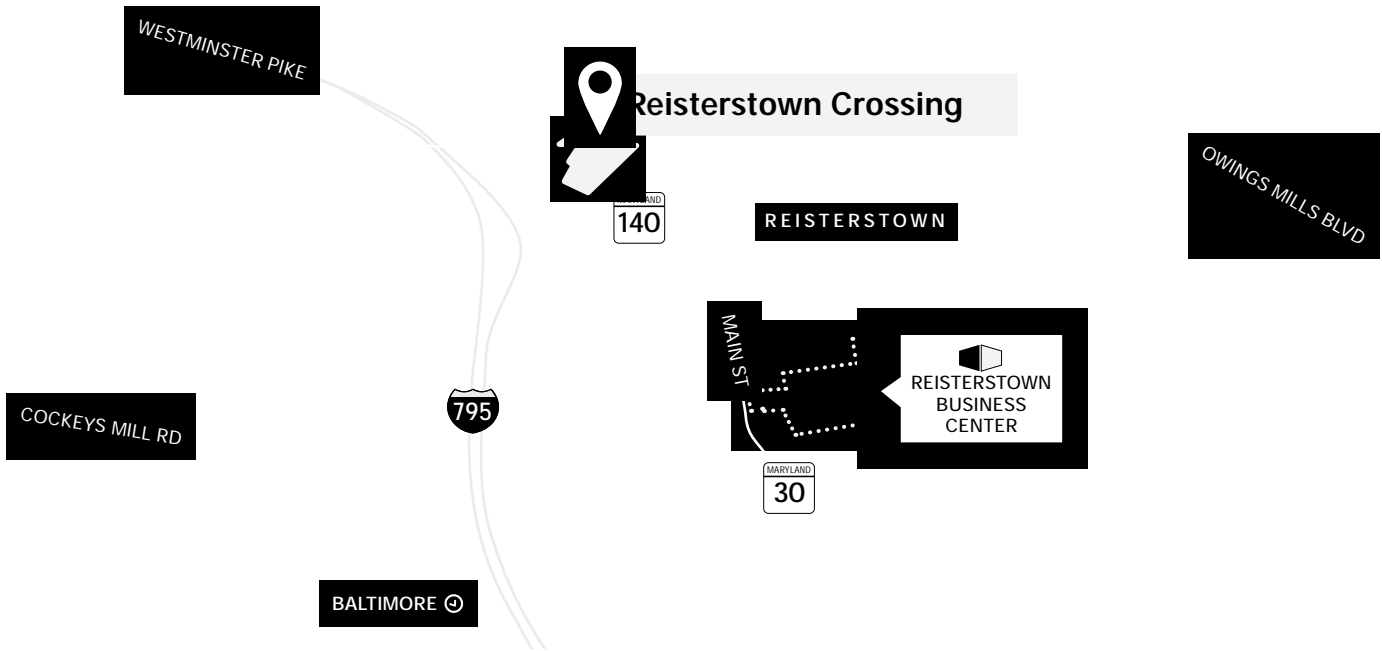


Total SF Available:
5,080 SF





Distances to:

Baltimore, MD (Downtown)	18 miles
BWI Airport	24 miles
Hampstead, MD	10 miles
Hanover, PA	26 miles
Interstate 695	9 miles
Interstate 795	2 miles
Manchester, MD	14 miles
Owings Mills, MD	5 miles
Westminster, MD	12 miles

About St. John Properties

St. John Properties, Inc. is a full-service real estate company headquartered in Baltimore, Maryland. The company owns, manages and has developed more than 21 million square feet of commercial real estate, including office, ex/R&D, warehouse, retail and residential space.






2560 Lord Baltimore Drive
 Baltimore, MD 21244
 410.788.0100 | SJPI.COM
 MD | CO | LA | NV | PA | UT | VA | WI

For additional leasing information
 or to schedule a tour, contact:

Michael Sacks
Partner in Training
 410.369.1233 | msacks@sjpi.com

Sean Doordan
Senior VP, Leasing & Acquisitions
 410.369.1211 | sdoordan@sjpi.com

Connect with us @stjohnprop    



This information contained in this publication has been obtained from sources believed to be reliable. St. John Properties makes no guarantee, warranty or representation about this information. Any projections, opinions, assumptions or estimates used here are for example only and do not represent the current or future performance of the property. Interested parties should conduct an independent investigation to determine whether the property suits their needs. REV 01/21