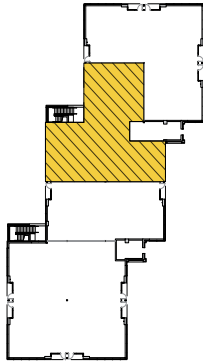
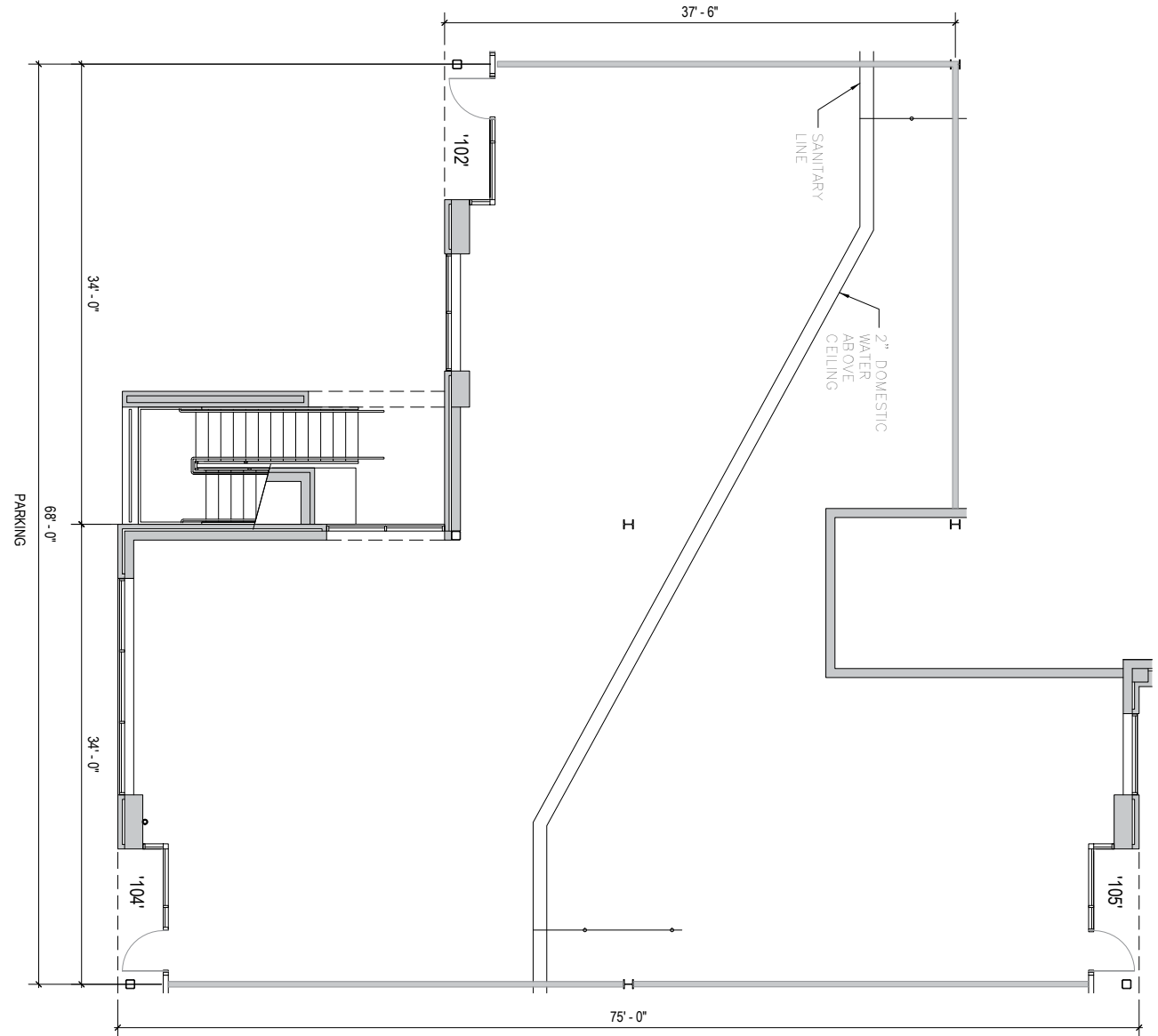


TOTAL SF AVAILABLE:
 3,598 SF

KEY PLAN
 NOT TO SCALE



NOTE: THIS SPACE PLAN IS SUBJECT TO EXISTING FIELD CONDITIONS. THIS DRAWING IS PROPRIETARY AND THE EXCLUSIVE PROPERTY OF ST. JOHN PROPERTIES, INC. ANY DUPLICATIONS, DISTRIBUTION, OR OTHER UNAUTHORIZED USE IS STRICTLY PROHIBITED.



About Reisterstown Crossing

Reisterstown Crossing is a 10-acre mixed-use business community located on Westminster Pike near I-795, Butler Road and Main Street in historic Reisterstown in Baltimore County, Maryland.

The unified architecture of St. John Properties' planned two office buildings, comprising approximately 75,000 square feet of office space, and the 13,000 square foot retail component, will provide Reisterstown Office Park a campus-like business environment. Tenant sizes from 1,300 square feet to 30,600 square feet of space offer businesses straight-forward, economical and high-utility space in a covenant-protected, well-maintained atmosphere. Free, ample parking is available adjacent to the building.

The retail portion of Reisterstown Office Park supports nearly 45,000 square feet of space, with identified uses including business services, restaurants and other service retail and featuring frontage and roadside visibility from Westminster Pike (MD Route 140).



RETAIL SPACE

RETAIL BUILDING

114 Westminster Pike 12,675 SF

TRAFFIC COUNT (MDOT)

Butler Road at Rt. 140 - 23,000 cars per day

DEMOGRAPHICS

	1 Mile	3 Miles	5 Miles
Population	4,966	35,813	69,315
Households	1,947	13,468	26,396
Avg. Household Income	\$80,972	\$92,869	\$95,247



SINGLE-STORY OFFICE SPACE

SINGLE-STORY OFFICE BUILDINGS

116 Westminster Pike 14,280 SF **LEED GOLD**

SINGLE-STORY OFFICE SPECIFICATIONS

LEED	Core & Shell
Suite Sizes	1,300 - 2,380 SF
Ceiling Height	9 ft. clear minimum
Offices	Built to suit
Parking	5 spaces per 1,000 SF
Heat	Gas
Roof	EPDM rubber
Exterior Walls	Brick on block



TWO-STORY OFFICE SPACE

TWO-STORY OFFICE BUILDINGS

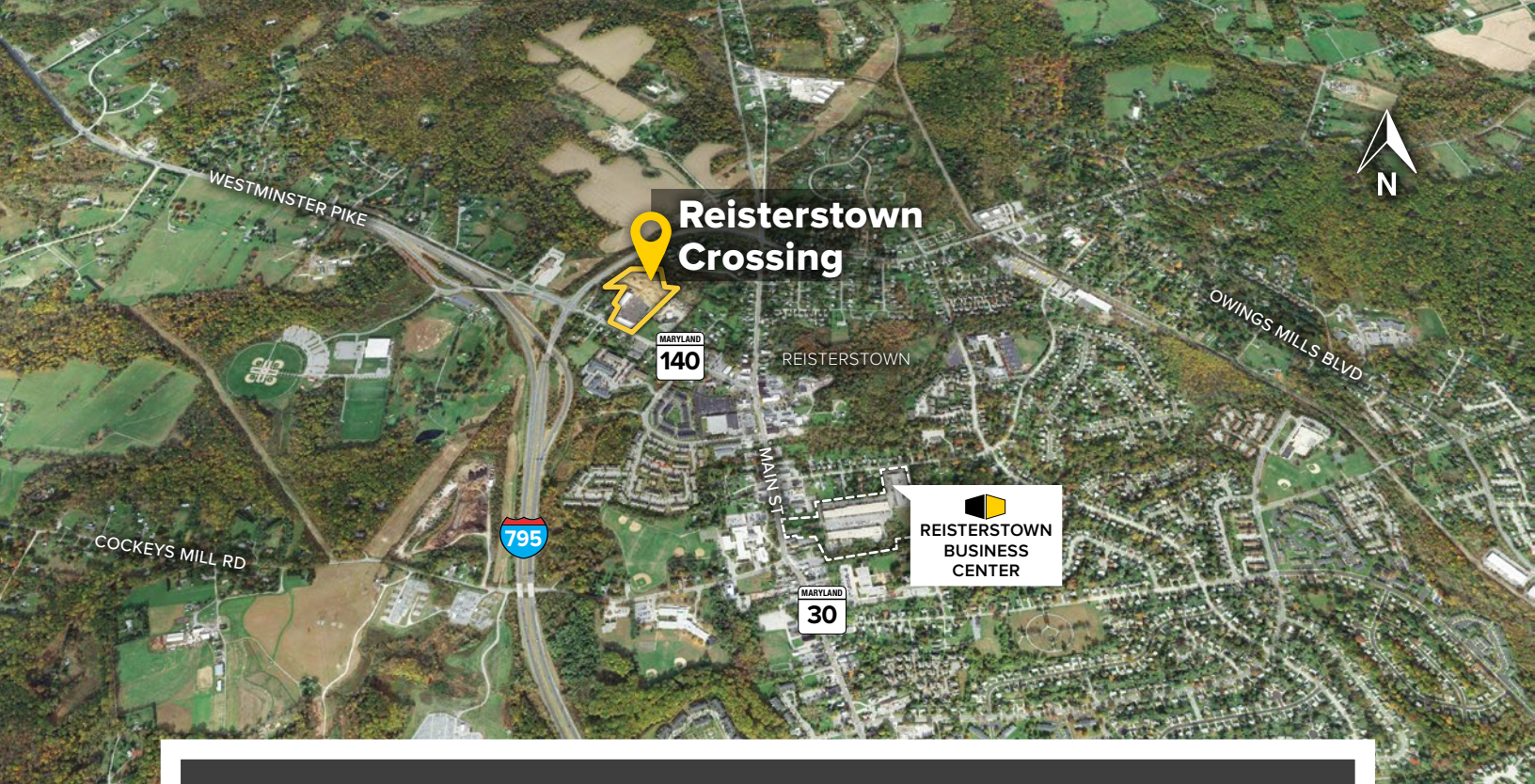
118 Westminster Pike 30,600 SF **LEED GOLD DESIGNED**

120 Westminster Pike 30,600 SF **FUTURE LEED DESIGNED**

TWO-STORY OFFICE SPECIFICATIONS

LEED	Core & Shell
Suite Sizes	2,318 - 2,582 SF
Ceiling Height	10 ft. clear minimum
Offices	Built to suit
Parking	4 spaces per 1,000 SF
Heat: 1st Floor	Heat pump
Heat: 2nd Floor	Gas
Elevator	Yes
Zoning	BM





For more information on Reisterstown Crossing, visit: sjpi.com/reisterstowncrossing

Distances to:

- Baltimore (Downtown)..... 18 miles
- BWI Airport..... 24 miles
- Hampstead, MD..... 10 miles
- Hanover, PA 26 miles
- Interstate 695..... 9 miles
- Interstate 795..... 2 miles
- Manchester, MD..... 14 miles
- Owings Mills, MD..... 5 miles
- Westminster, MD..... 12 miles

About St. John Properties

St. John Properties, Inc. is a full-service real estate company headquartered in Baltimore, Maryland. The company owns, manages and has developed more than 18 million square feet of commercial real estate, including flex/R&D, warehouse, office and retail space.



2560 Lord Baltimore Drive
 Baltimore, MD 21244
 410.788.0100 | SJPI.COM
 CO | MD | NV | PA | LA | UT | VA | WI

**For additional leasing information
 or to schedule a tour, contact:**

Will McCullough *Leasing Agent*
 410.369.1207 | wmccullough@sjpi.com

Richard Williamson
SVP Leasing & Marketing
 410.369.1222 | rwilliamson@sjpi.com



Follow us @stjohnprop

This information contained in this publication has been obtained from sources believed to be reliable. St. John Properties makes no guarantee, warranty or representation about this information. Any projections, opinions, assumptions or estimates used here are for example only and do not represent the current or future performance of the property. Interested parties should conduct an independent investigation to determine whether the property suits their needs. REV 07/17