

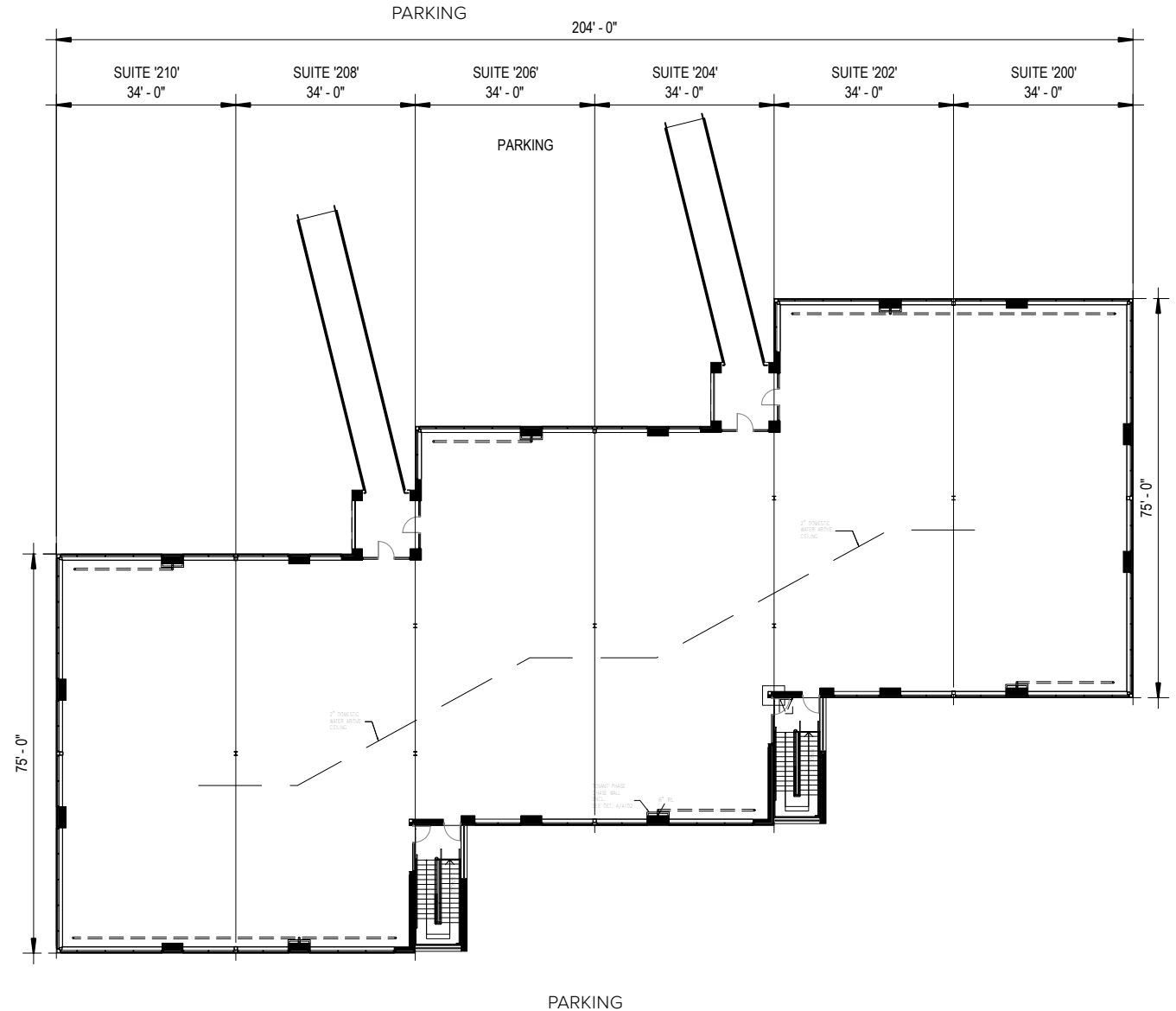
**Reisterstown Crossing**  
120 Westminster Pike | Reisterstown, MD 21136  
Suites 200–210 | Second Floor



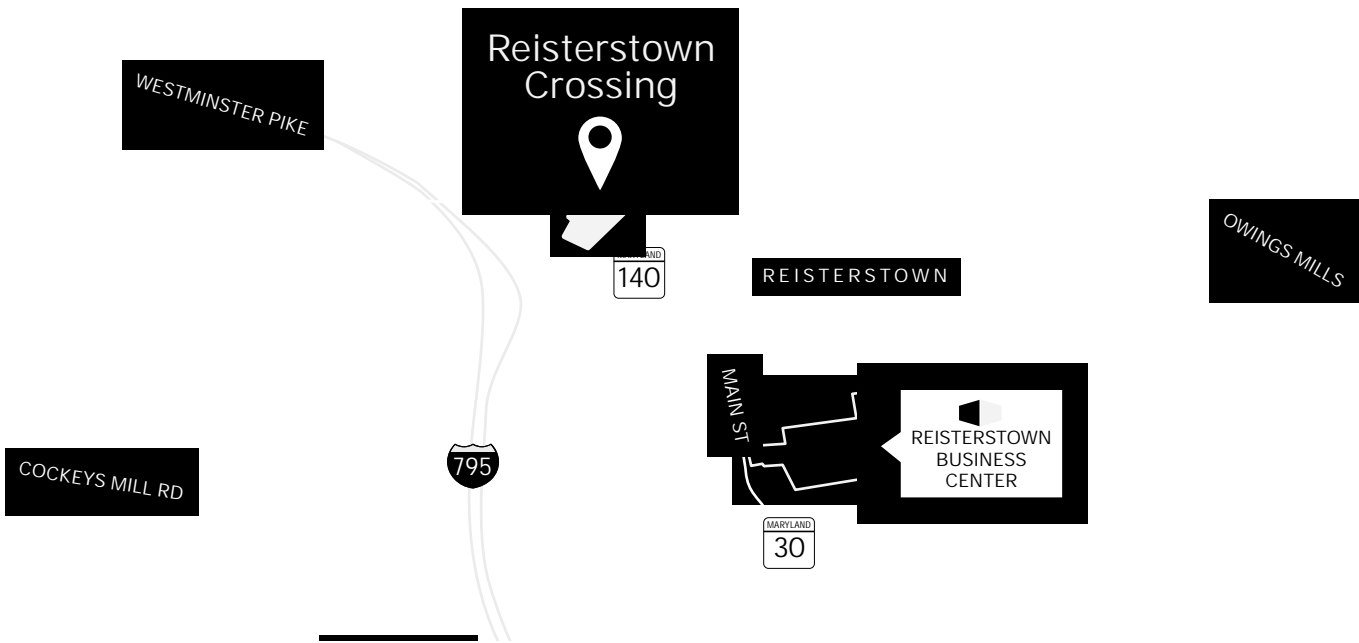
**Total SF Available:**  
2,550 up to 15,852 SF

*New construction delivering  
Q1 2022, build-to-suit opportunity.  
Direct-entry office with ample  
glass; designed for LEED  
certification*

**Note:** This space plan is subject to existing field conditions. This drawing is proprietary and the exclusive property of St. John Properties, Inc. Any duplications, distribution, or other unauthorized use is strictly prohibited.







Distances to:

Baltimore, MD (Downtown) .....	18 miles
BWI Airport .....	24 miles
Hampstead, MD .....	10 miles
Hanover, PA .....	26 miles
Interstate 695 .....	9 miles
Interstate 795 .....	2 miles
Manchester, MD .....	14 miles
Owings Mills, MD .....	5 miles
Westminster, MD .....	12 miles



Scan with your mobile device to take a virtual tour, download floor plans and more!

# Contact Us

For additional leasing information or to schedule a tour, contact:

Michael Sacks  
Partner in Training  
msacks@sjpi.com  
410.369.1233

Matt Lenihan  
Vice President, Leasing  
mlenihan@sjpi.com  
410.369.1202

Corporate Headquarters:  
2560 Lord Baltimore Drive  
Baltimore, MD 21244  
410.788.0100 | SJPI.COM

### About St. John Properties

St. John Properties, Inc. is a full-service real estate company headquartered in Baltimore, Maryland. The company owns, manages and has developed more than 21 million square feet of commercial real estate, including office, ex/R&D, warehouse, retail and residential space.

Connect with us @stjohnprop

