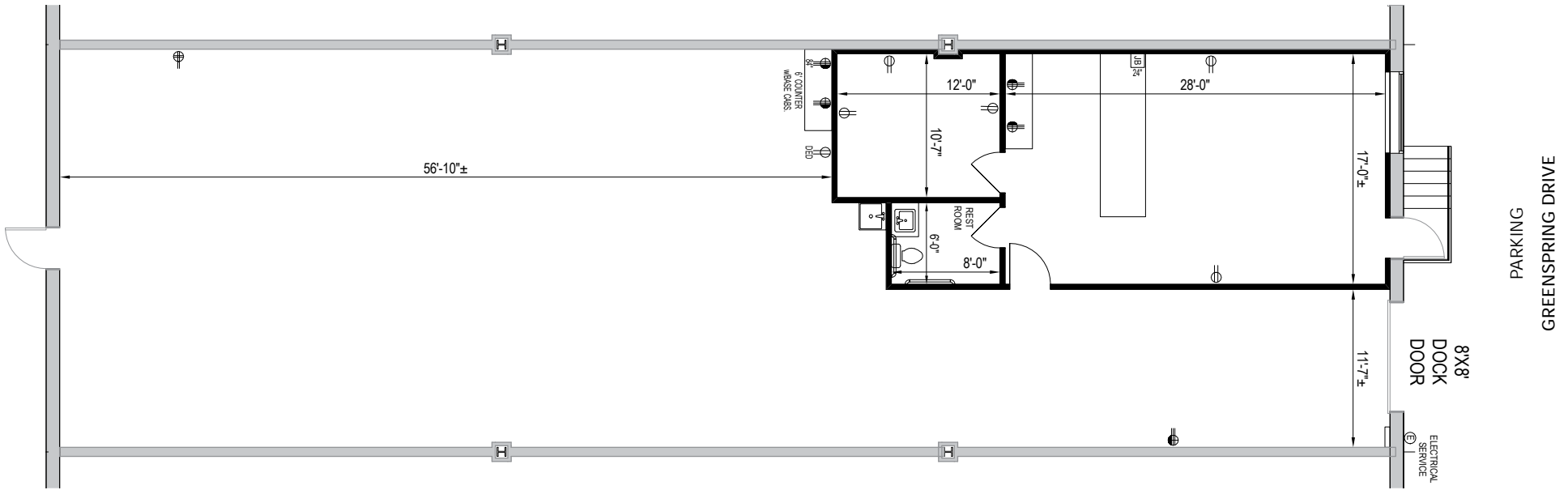
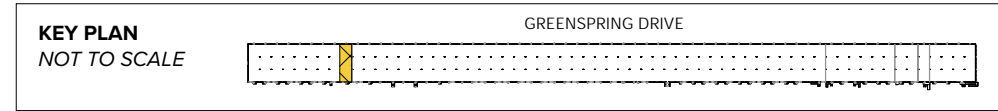
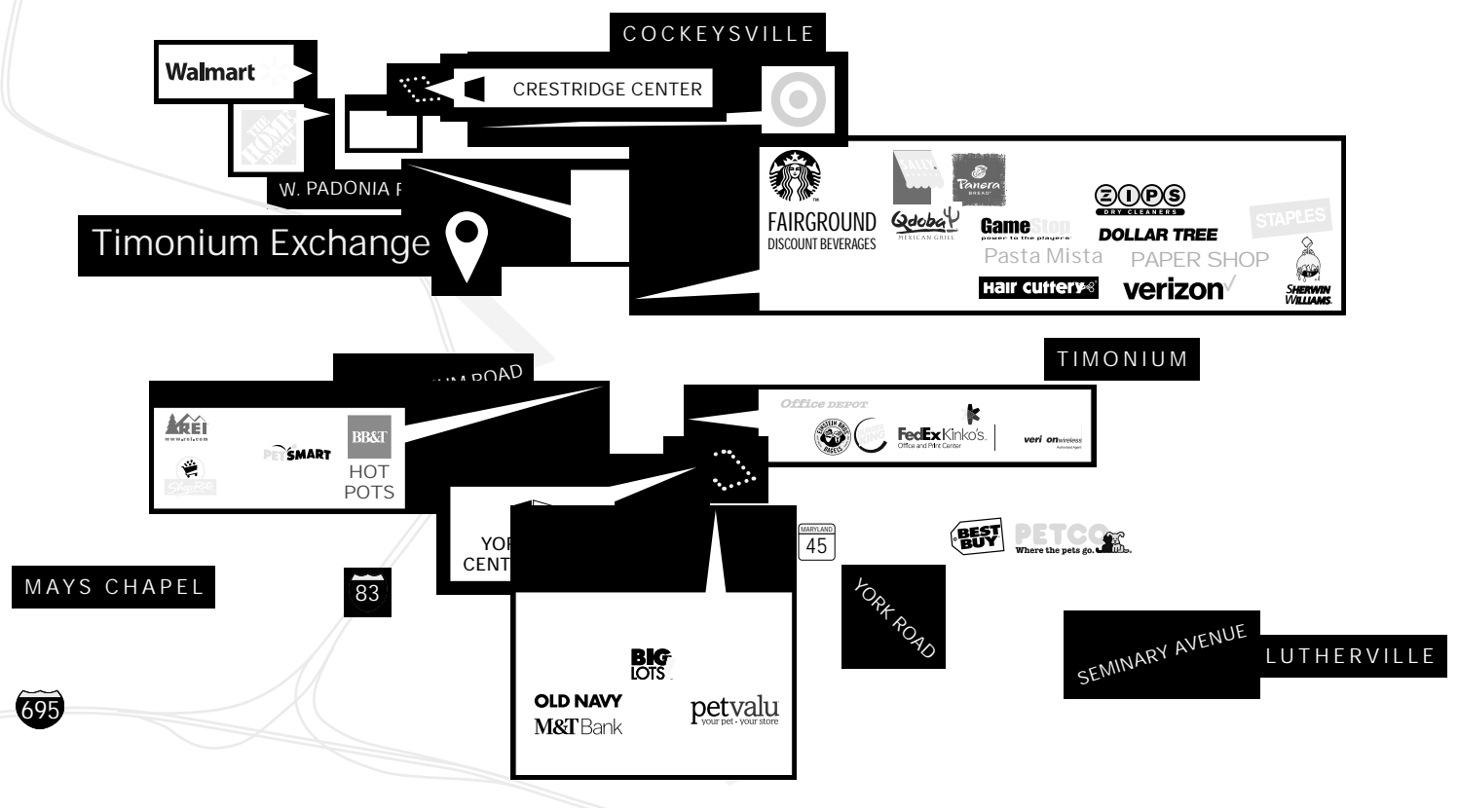


Timonium Exchange
2233 Greenspring Drive | Timonium, MD 21093

Total SF Available:
3,000 SF



Note: This space plan is subject to existing field conditions. This drawing is proprietary and the exclusive property of St. John Properties, Inc. Any duplications, distribution, or other unauthorized use is strictly prohibited.



Distances to:

Baltimore, MD (Downtown)	12 miles
BWI Airport	22 miles
Interstate 83	0.2 mile
Interstate 95	11 miles
Interstate 695 (Baltimore Beltway)	2 miles
Washington, D.C. (Downtown)	50 miles
York, PA	40 miles



Contact Us

For additional leasing information or to schedule a tour, contact:

FLEX/R&D SPACE:

Michael Sacks
 Partner in Training
 msacks@sjpi.com
 410.369.1233

Matt Lenihan
 Vice President, Leasing
 mlenihan@sjpi.com
 410.369.1202

RETAIL SPACE:

Bill Holzman
 Vice President, Retail Leasing
 bholzman@sjpi.com
 410.369.1240

Eric Llewellyn
 Retail Leasing Representative
 ellewellyn@sjpi.com
 443.464.1308

Corporate Headquarters:
 2560 Lord Baltimore Drive, Baltimore, MD 21244
 410.788.0100 | SJPI.COM



Scan with your mobile device to take a virtual tour, download our plans and more!

About St. John Properties
 St. John Properties, Inc. is a full-service real estate company headquartered in Baltimore, Maryland. The company owns, manages and has developed more than 21 million square feet of commercial real estate, including office, ex/R&D, warehouse, retail and residential space.

Connect with us @stjohnprop



This information contained in this publication has been obtained from sources believed to be reliable. St. John Properties makes no guarantee, warranty or representation about this information. Any projections, opinions, assumptions or estimates used here are for example only and do not represent the current or future performance of the property. Interested parties should conduct an independent investigation to determine whether the property suits their needs. REV 04/21