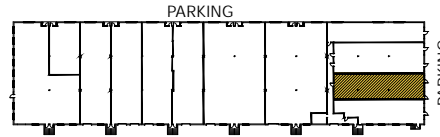
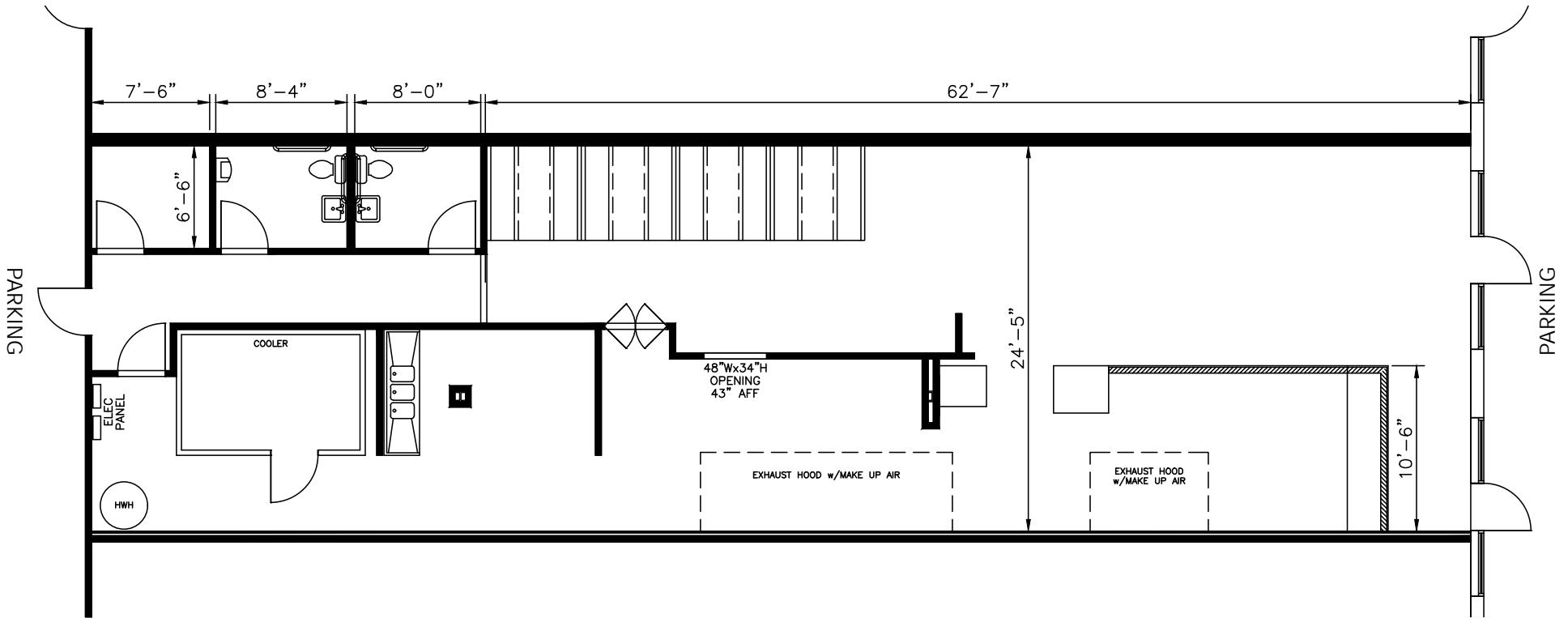


**Total SF Available:**  
2,495 SF

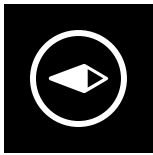
**KEY PLAN**  
NOT TO SCALE



[Take a Virtual Tour](#)







Yorkridge Center North



WARREN ROAD

Walmart

BEAVER DAM ROAD

45

YORK ROAD

CRESTRIDGE CENTER

CRANBROOK ROAD

45

YORK ROAD

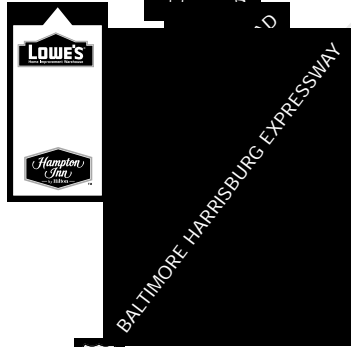


TIMONIUM EXCHANGE

MARYLAND STATE ROUTE 83

83

TO 695



CRANBROOK ROAD

PADONIA ROAD

BALTIMORE HARRISBURG EXPRESSWAY

83

For additional leasing information or to schedule a tour, contact:

Eric Llewellyn  
Retail Leasing Representative  
443.464.1308 | ellewellyn@sjpi.com

Bill Holzman  
Vice President, Retail Leasing  
410.369.1240 | bholzman@sjpi.com

### About St. John Properties

St. John Properties, Inc. is a full-service real estate company headquartered in Baltimore, Maryland. The company owns, manages and has developed more than 20 million square feet of commercial real estate, including office, ex/R&D, warehouse, retail and residential space.



2560 Lord Baltimore Drive, Baltimore, MD 21244  
410.788.0100 | SJPI.COM  
MD | CO | LA | NV | PA | UT | VA | WI



Connect with us @stjohnprop    

This information contained in this publication has been obtained from sources believed to be reliable. St. John Properties makes no guarantee, warranty or representation about this information. Any projections, opinions, assumptions or estimates used here are for example only and do not represent the current or future performance of the property. Interested parties should conduct an independent investigation to determine whether the property suits their needs. REV 06/20