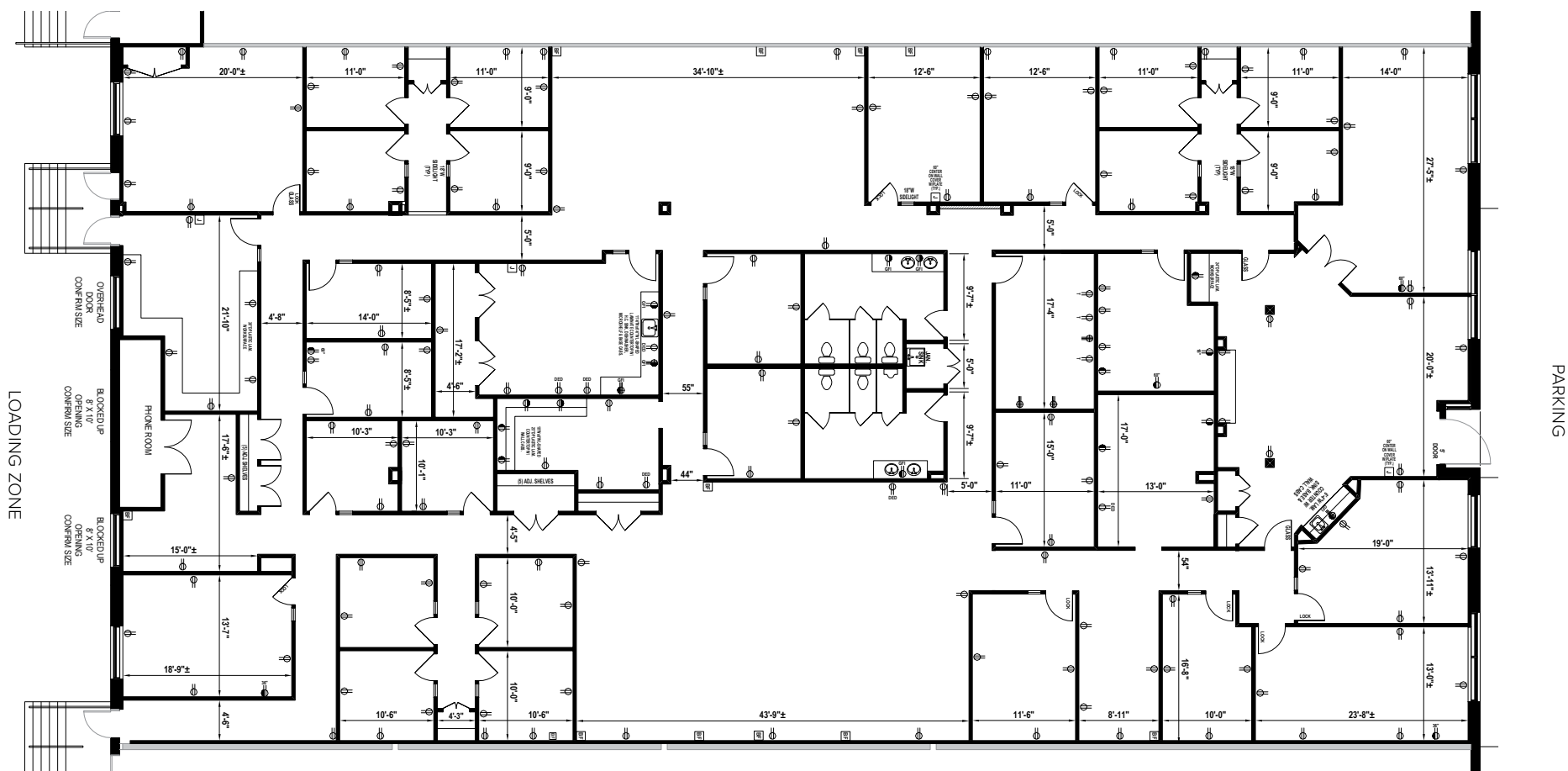


11,983 SF

A diagram of a warehouse layout. A yellow cross-hatched rectangular area is labeled 'LOADING ZONE' at the bottom. Above this area, the word 'PARKING' is written. The warehouse floor is represented by a grid of dots, and the layout includes various structural elements like walls and doors.



**Note:** This space plan is subject to existing field conditions. This drawing is proprietary and the exclusive property of St. John Properties, Inc. Any duplications, distribution, or other unauthorized use is strictly prohibited.

## About Yorkridge Center North

Yorkridge Center North is a 115,120 square foot mixed use project. Located in the Cockeysville/Hunt Valley area of Baltimore County, Yorkridge Center North is easily accessible from the Warren Road Interchange (Exit 18) off Interstate 83. The property offers affordable leasing rates in spaces suitable for high-tech, research, professional, or retail use.



### Retail Space

#### Retail Buildings

|                 |          |
|-----------------|----------|
| 10301 York Road | 3,353 SF |
| 10540 York Road | 9,633 SF |

### Flex/R&D Space

#### Flex/R&D Buildings

|                 |           |
|-----------------|-----------|
| 10626 York Road | 58,903 SF |
| 10540 York Road | 30,320 SF |

#### Flex/R&D Specifications

|                |                       |
|----------------|-----------------------|
| Suite Sizes    | 2,520 up to 58,903 SF |
| Ceiling Height | 16 ft. clear minimum  |
| Offices        | Built to suit         |
| Parking        | 4 spaces per 1,000 SF |
| Heat           | Gas                   |
| Roof           | EPDM rubber           |
| Exterior Walls | Brick on block        |
| Loading        | Dock or drive-in      |
| Zoning         | BM-IM & ML-IM         |

### Two-Story Office Space

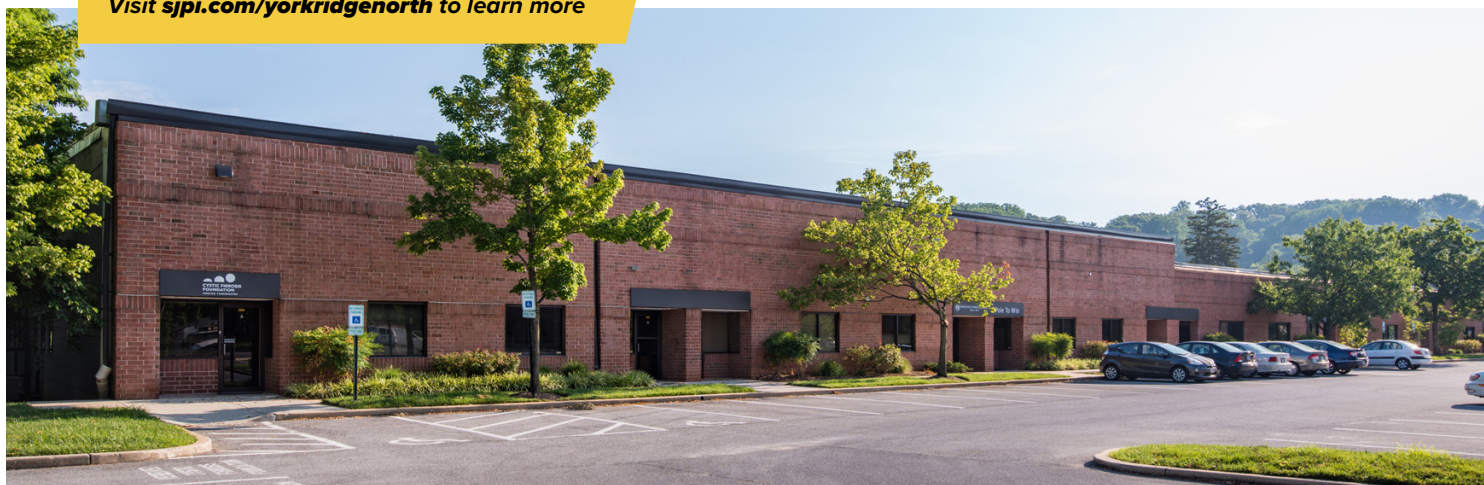
#### Two-Story Office Buildings

|                 |           |
|-----------------|-----------|
| 10600 York Road | 16,265 SF |
|-----------------|-----------|

#### Two-Story Office Specifications

|                 |                       |
|-----------------|-----------------------|
| Suite Sizes     | 1,180 up to 16,265 SF |
| Ceiling Height  | 8 ft. clear minimum   |
| Offices         | Built to suit         |
| Parking         | 5 spaces per 1,000 SF |
| Heat: 1st Floor | Heat pump             |
| Heat: 2nd Floor | Gas                   |
| Roof            | EPDM rubber           |
| Exterior Walls  | Brick on block        |
| Zoning          | BM-IM & ML-IM         |

Visit [sjpi.com/yorkridgenorth](http://sjpi.com/yorkridgenorth) to learn more







#### Distances to:

|                          |          |
|--------------------------|----------|
| Baltimore, MD (Downtown) | 14 miles |
| BWI Airport              | 24 miles |
| Harrisburg, PA           | 60 miles |
| Interstate 83            | 2 miles  |
| Interstate 695           | 4 miles  |
| Timonium, MD             | 4 miles  |
| Towson, MD               | 6 miles  |
| York, PA                 | 36 miles |

## Contact Us

For additional leasing information or to schedule a tour, contact:

**Raphael Alterman**  
Partner in Training  
ralterman@sjpi.com  
410.369.1236

**Matt Lenihan**  
Vice President, Leasing  
mlenihan@sjpi.com  
410.369.1202

**Corporate Headquarters:**  
2560 Lord Baltimore Drive  
Baltimore, MD 21244

**410.788.0100 | SJPI.COM**



Scan with your mobile device to take a virtual tour, download floor plans and more!

#### About St. John Properties

St. John Properties, Inc. is a full-service real estate company headquartered in Baltimore, Maryland. The company owns, manages and has developed more than 22 million square feet of commercial real estate, including office, flex/R&D, warehouse, retail and residential space.

Connect with us @stjohnprop



This information contained in this publication has been obtained from sources believed to be reliable. St. John Properties makes no guarantee, warranty or representation about this information. Any projections, opinions, assumptions or estimates used here are for example only and do not represent the current or future performance of the property. Interested parties should conduct an independent investigation to determine whether the property suits their needs. REV 01/22