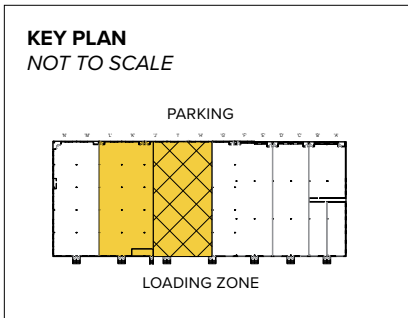


Yorkridge Center North
10626 York Road | Cockeysville, MD 21030
Suites H-L

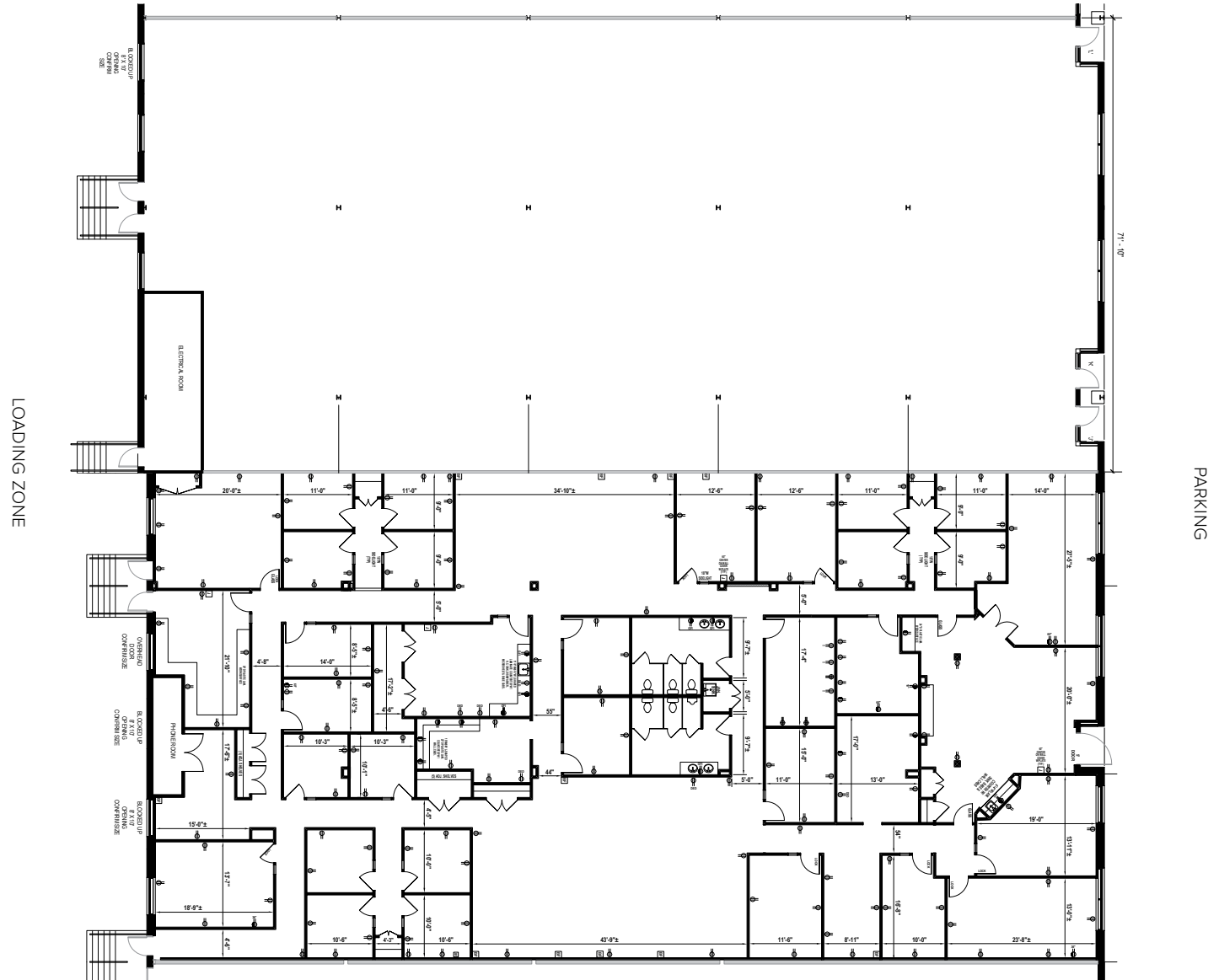


Total SF Available:
11,983 up to 22,800 SF

11,893 sq. ft. office, nice turn-key build-out, fully conditioned warehouse with dock loading, painted deck



Note: This space plan is subject to existing field conditions. This drawing is proprietary and the exclusive property of St. John Properties, Inc. Any duplications, distribution, or other unauthorized use is strictly prohibited.



About Yorkridge Center North

Yorkridge Center North is a 115,120 square foot mixed use project. Located in the Cockeysville/Hunt Valley area of Baltimore County, Yorkridge Center North is easily accessible from the Warren Road Interchange (Exit 18) off Interstate 83. The property offers affordable leasing rates in spaces suitable for high-tech, research, professional, or retail use.



Retail Space

Retail Buildings

10301 York Road	3,353 SF
10540 York Road	9,633 SF

Flex/R&D Space

Flex/R&D Buildings

10626 York Road	58,903 SF
10540 York Road	30,320 SF

Flex/R&D Specifications

Suite Sizes	2,520 up to 58,903 SF
Ceiling Height	16 ft. clear minimum
Offices	Built to suit
Parking	4 spaces per 1,000 SF
Heat	Gas
Roof	EPDM rubber
Exterior Walls	Brick on block
Loading	Dock or drive-in
Zoning	BM-IM & ML-IM

Two-Story Office Space

Two-Story Office Buildings

10600 York Road	16,265 SF
-----------------	-----------

Two-Story Office Specifications

Suite Sizes	1,180 up to 16,265 SF
Ceiling Height	8 ft. clear minimum
Offices	Built to suit
Parking	5 spaces per 1,000 SF
Heat: 1st Floor	Heat pump
Heat: 2nd Floor	Gas
Roof	EPDM rubber
Exterior Walls	Brick on block
Zoning	BM-IM & ML-IM

Visit sjpi.com/yorkridgenorth to learn more





Distances to:

Baltimore, MD (Downtown)	14 miles
BWI Airport	24 miles
Harrisburg, PA	60 miles
Interstate 83	2 miles
Interstate 695	4 miles
Timonium, MD	4 miles
Towson, MD	6 miles
York, PA	36 miles



Scan with your mobile device to take a virtual tour, download floor plans and more!

Contact Us

For additional leasing information or to schedule a tour, contact:

Raphael Alterman
 Partner in Training
 raltermans@sjpi.com
 410.369.1236

Matt Lenihan
 Vice President, Leasing
 mlenihan@sjpi.com
 410.369.1202

Corporate Headquarters:
 2560 Lord Baltimore Drive
 Baltimore, MD 21244

410.788.0100 | SJPI.COM

About St. John Properties

St. John Properties, Inc. is a full-service real estate company headquartered in Baltimore, Maryland. The company owns, manages and has developed more than 22 million square feet of commercial real estate, including office, flex/R&D, warehouse, retail and residential space.

Connect with us @stjohnprop



This information contained in this publication has been obtained from sources believed to be reliable. St. John Properties makes no guarantee, warranty or representation about this information. Any projections, opinions, assumptions or estimates used here are for example only and do not represent the current or future performance of the property. Interested parties should conduct an independent investigation to determine whether the property suits their needs. REV 01/22