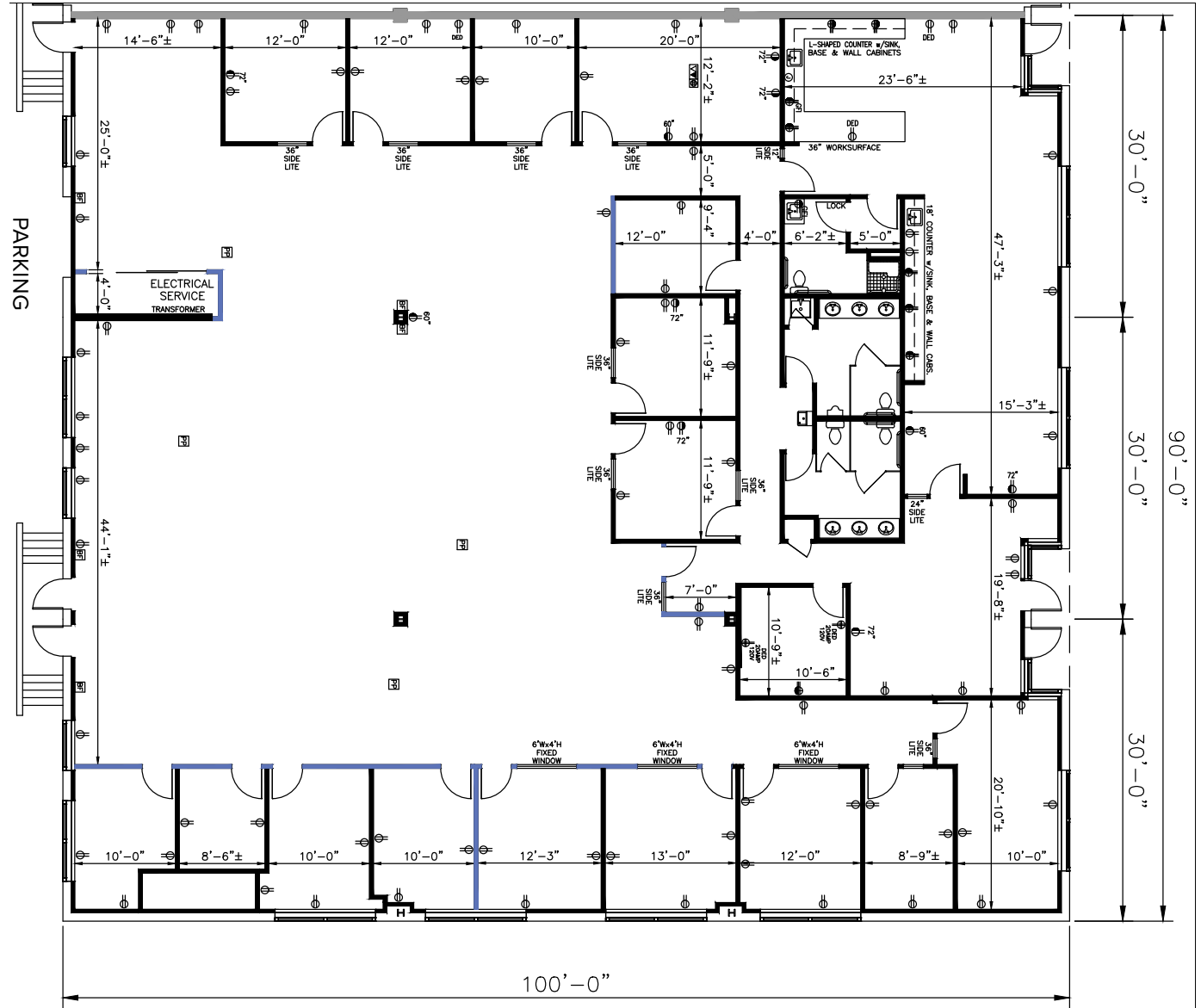
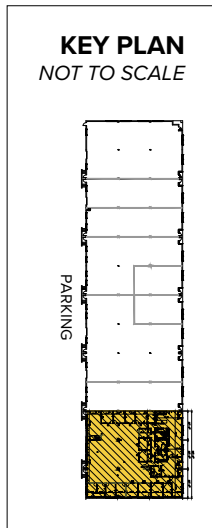


Total SF Available:
9,000 SF



Note: This space plan is subject to existing field conditions. This drawing is proprietary and the exclusive property of St. John Properties, Inc. Any duplications, distribution, or other unauthorized use is strictly prohibited.

About Yorkridge Center South

Conveniently located in the Timonium area of Baltimore County, Yorkridge Center South consists of three buildings comprising more than 101,200 sq. ft. of retail and flex/R&D space. This location is easily accessible from the Timonium Road exit off Interstate 83 and offers easy access to the Baltimore Beltway (Interstate 695), downtown Baltimore, Towson, Timonium, BWI Airport to the south, and points north including the Harrisburg and York, PA markets.

For more information on Yorkridge Center South, visit: sjpi.com/yorkridgesouth



Flex/R&D Space

Flex/R&D Buildings

1840 York Road	38,985 SF
----------------	-----------

1850 York Road	42,042 SF
----------------	-----------

Flex/R&D Specifications

Suite Sizes	1,500 up to 42,042 SF
-------------	-----------------------

Ceiling Height	16 ft. clear minimum
----------------	----------------------

Offices	Built to suit
---------	---------------

Parking	4 spaces per 1,000 SF
---------	-----------------------

Heat	Gas
------	-----

Roof	EPDM rubber
------	-------------

Exterior Walls	Brick on block
----------------	----------------

Loading	Dock or drive-in
---------	------------------

Zoning	BM-IM & ML-IM
--------	---------------

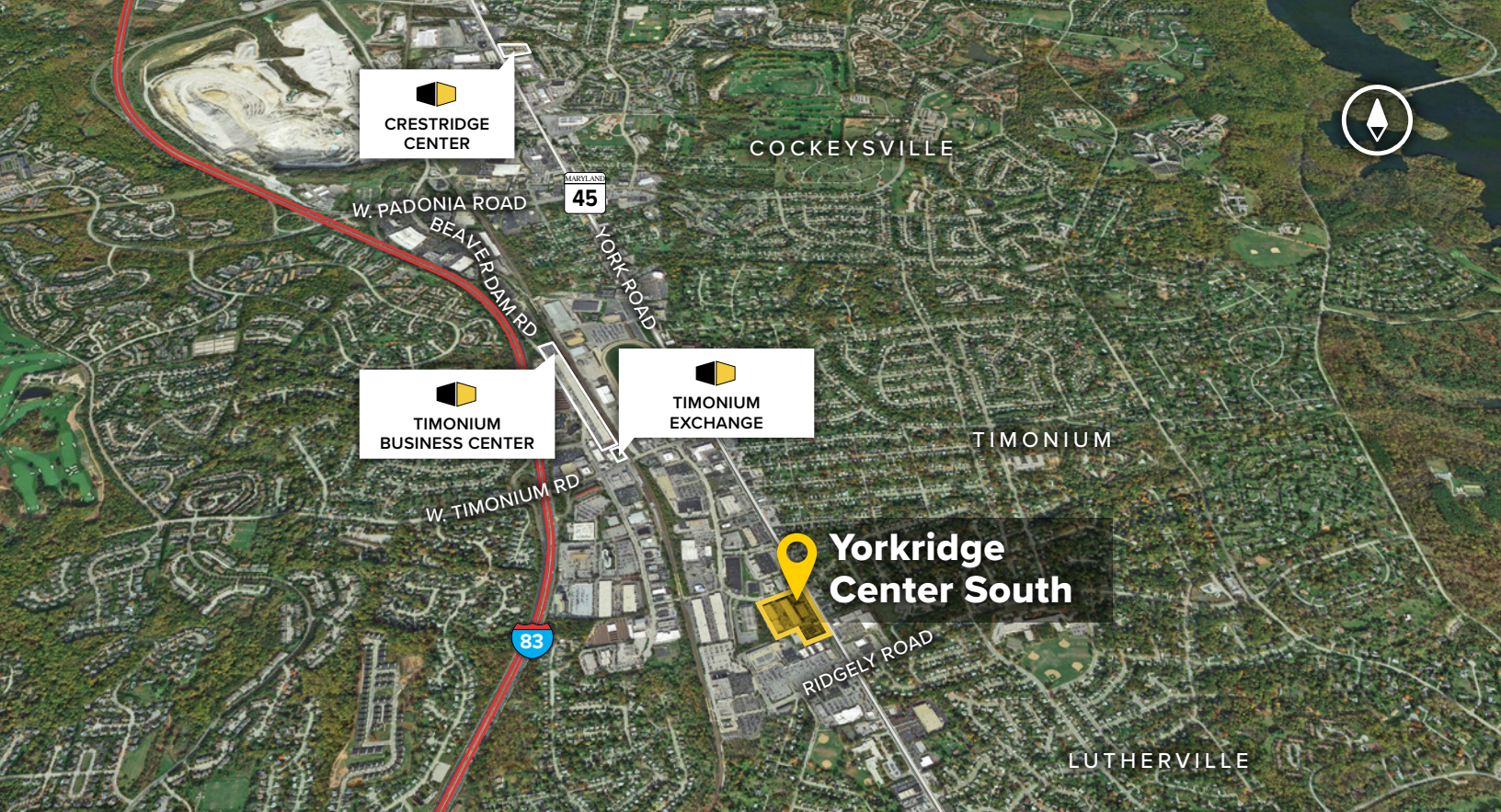


Retail Space

Retail Buildings

11830 York Road	20,187 SF
-----------------	-----------

Bertucci's Italian Restaurant	6,280 SF
-------------------------------	----------



Distances to:

Baltimore, MD (Downtown)	10 miles
BWI Airport	20 miles
Cockeysville, MD	3 miles
Harrisburg, PA	65 miles
Interstate 83	1 mile
Interstate 695	2 miles
Towson, MD	2 miles
York, PA	40 miles

About St. John Properties

St. John Properties, Inc. is a full-service real estate company headquartered in Baltimore, Maryland. The company owns, manages and has developed more than 20 million square feet of commercial real estate, including office, flex/R&D, warehouse, retail and residential space.



2560 Lord Baltimore Drive
Baltimore, MD 21244

410.788.0100 | SJPI.COM

MD | CO | LA | NV | PA | UT | VA | WI

**For additional leasing information
or to schedule a tour, contact:**

Will McCullough
Leasing Representative
410.369.1207 | wmcullough@sjpi.com

Sean Doordan
Senior VP, Leasing & Acquisitions
410.369.1211 | sdoordan@sjpi.com

Connect with us @stjohnprop    



This information contained in this publication has been obtained from sources believed to be reliable. St. John Properties makes no guarantee, warranty or representation about this information. Any projections, opinions, assumptions or estimates used here are for example only and do not represent the current or future performance of the property. Interested parties should conduct an independent investigation to determine whether the property suits their needs. REV 06/20