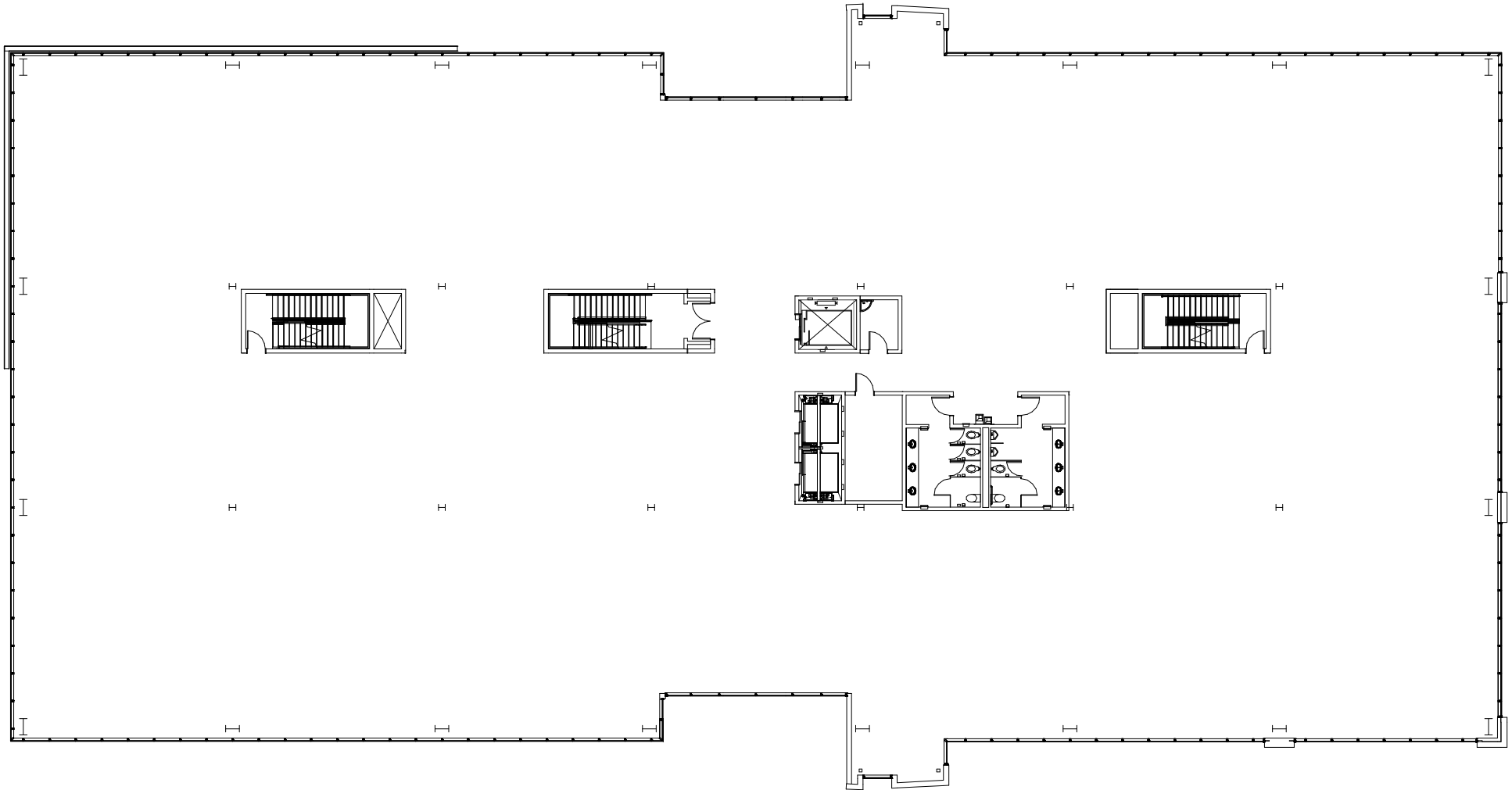


VALLEY GROVE

1064 S. North County Boulevard | Pleasant Grove, UT 84062
Second Floor

TOTAL SF AVAILABLE:

Up to 28,466 SF





MID-RISE OFFICE SPACE

MID-RISE OFFICE BUILDINGS

Valley Grove I	165,493 SF	FUTURE
Valley Grove II	143,000 SF	FUTURE
Valley Grove III	114,000 SF	FUTURE

MID-RISE OFFICE SPECIFICATIONS

LEED	Designed
Suite Sizes	2,500 up to 425,000 SF
Ceiling Height	10 - 13 ft. clear minimum
Offices	Built to suit
Parking	5 spaces per 1,000 SF



GROVE TOWER

SIX-STORY OFFICE BUILDING

2100 Pleasant Grove Blvd.	189,783 SF
---------------------------	------------

SIX-STORY OFFICE SPECIFICATIONS

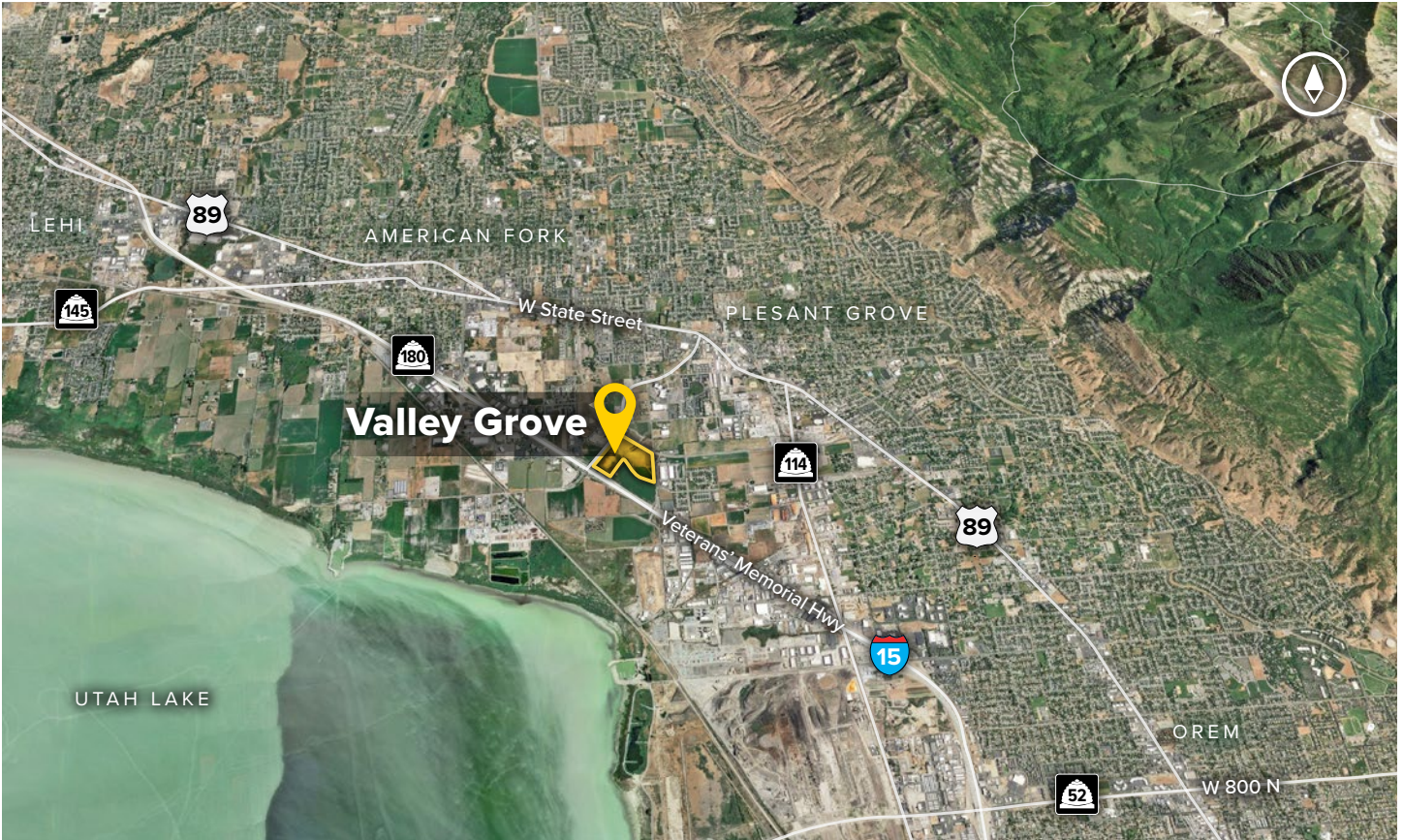
LEED	Designed
Suite Sizes	2,500 up to 189,783 SF
Ceiling Height	10 - 13 ft. clear minimum
Offices	Built to suit
Parking	5.5 spaces per 1,000 SF

Mountain views & floor-to-ceiling glass



Mountain views & floor-to-ceiling glass





Distances to:

- I-1525 mile
- I-215 25 miles
- Provo, UT 12 miles
- Salt Lake City, UT 34.5 miles
- Salt Lake City International Airport 38 miles

**For additional leasing information
or to schedule a tour, contact:**

Daniel Thomas *Regional Partner*
801.899.7991 | dthomas@sjpiutah.com

About St. John Properties

St. John Properties, Inc. is a full-service real estate company headquartered in Baltimore, Maryland. The company owns, manages and has developed more than 19 million square feet of commercial real estate, including office, flex/R&D, warehouse, retail and residential space.



1982 W. Pleasant Grove Boulevard, Suite D
Pleasant Grove, Utah 84062
801.899.7991 | THEVALLEYGROVE.COM
MD | CO | LA | NV | PA | UT | VA | WI



Connect with us @[thevalleygrove](https://www.instagram.com/thevalleygrove)  

This information contained in this publication has been obtained from sources believed to be reliable. St. John Properties makes no guarantee, warranty or representation about this information. Any projections, opinions, assumptions or estimates used here are for example only and do not represent the current or future performance of the property. Interested parties should conduct an independent investigation to determine whether the property suits their needs. REV 10/18