

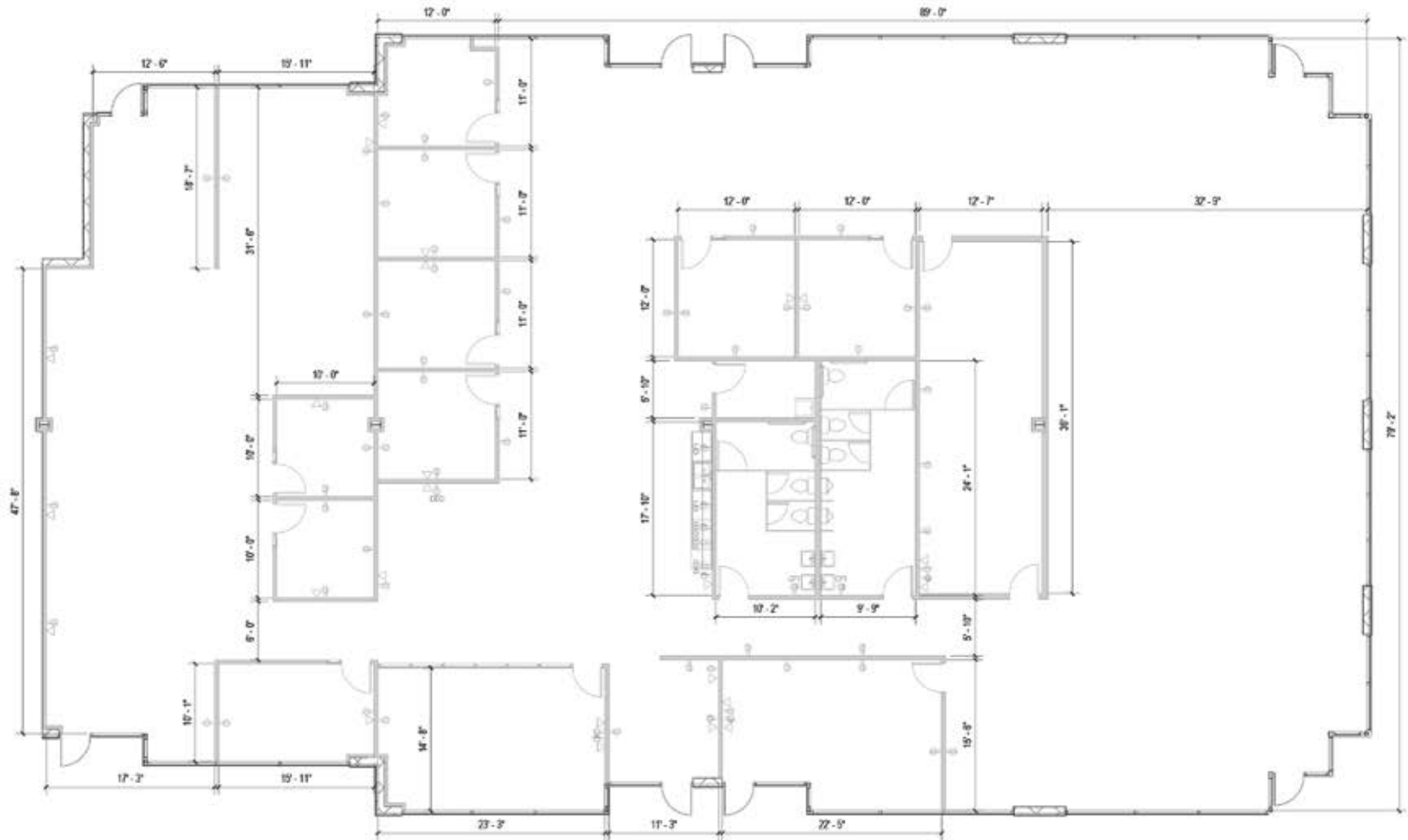
**VALLEY GROVE**

2015 W. Grove Parkway | Pleasant Grove, UT 84062

Suites G-K

**TOTAL SF AVAILABLE:**  
10,639 SF

**KEY PLAN**  
NOT TO SCALE





## Single-Story Office

2015, 2054 & 2086 W Grove Parkway & 1982 W Pleasant Grove Boulevard



### Single-Story Office

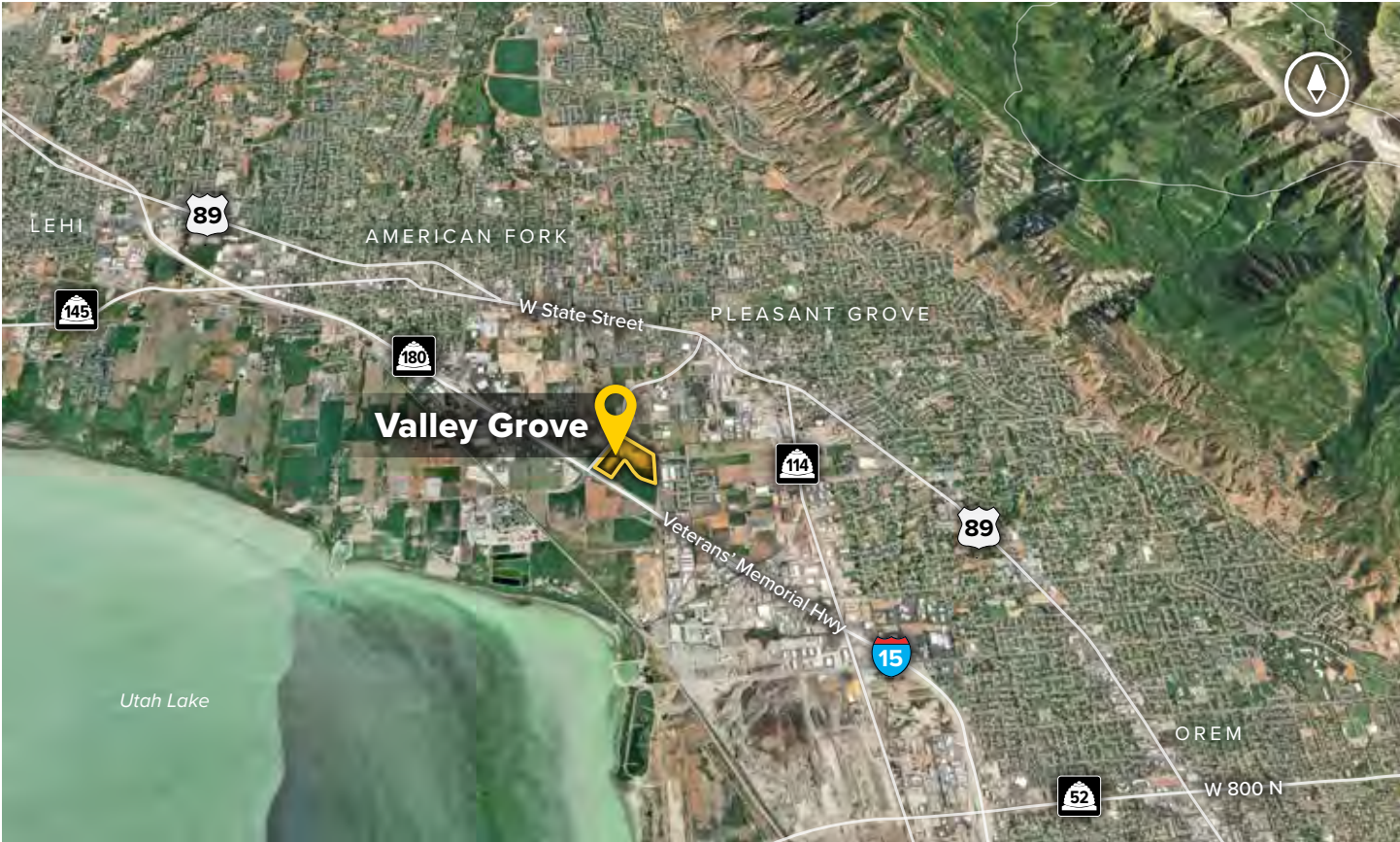
#### Single-Story Office Buildings

1982 W Pleasant Grove Blvd	28,560 SF	
2015 W Grove Parkway	25,840 SF	
2054 W Grove Parkway	25,840 SF	FUTURE
2086 W Grove Parkway	23,120 SF	FUTURE

#### Single-Story Office Specifications

LEED	Certified
Suite Sizes	1,245 up to 28,560 SF
Ceiling Height	10-14 ft. clear minimum
Offices	Built to suit & existing
Parking	5.5 spaces per 1,000 SF





**Distances to:**

- Interstate 215 ..... 25 miles
- Provo, UT ..... 12 miles
- Salt Lake City, UT ..... 34.5 miles
- Salt Lake City International Airport ..... 38 miles

**About St. John Properties**

St. John Properties, Inc. is a full-service real estate company headquartered in Baltimore, Maryland. The company owns, manages and has developed more than 20 million square feet of commercial real estate, including office, flex/R&D, warehouse, retail and residential space.

**For additional leasing information or to schedule a tour, contact:**

**Scott Gifford**  
*Leasing Representative*  
 sgifford@sjpiutah.com  
 801.899.7991

**Daniel Thomas**  
*Regional Partner, Utah*  
 dthomas@sjpiutah.com  
 801.899.7991



1982 W Pleasant Grove Boulevard | Suite D  
 Pleasant Grove, Utah 84062

**801.899.7991 | THEVALLEYGROVE.COM**  
 MD | CO | LA | NV | PA | UT | VA | WI

Connect with us @thevalleygrove  



This information contained in this publication has been obtained from sources believed to be reliable. St. John Properties makes no guarantee, warranty or representation about this information. Any projections, opinions, assumptions or estimates used here are for example only and do not represent the current or future performance of the property. Interested parties should conduct an independent investigation to determine whether the property suits their needs. REV 03/20