

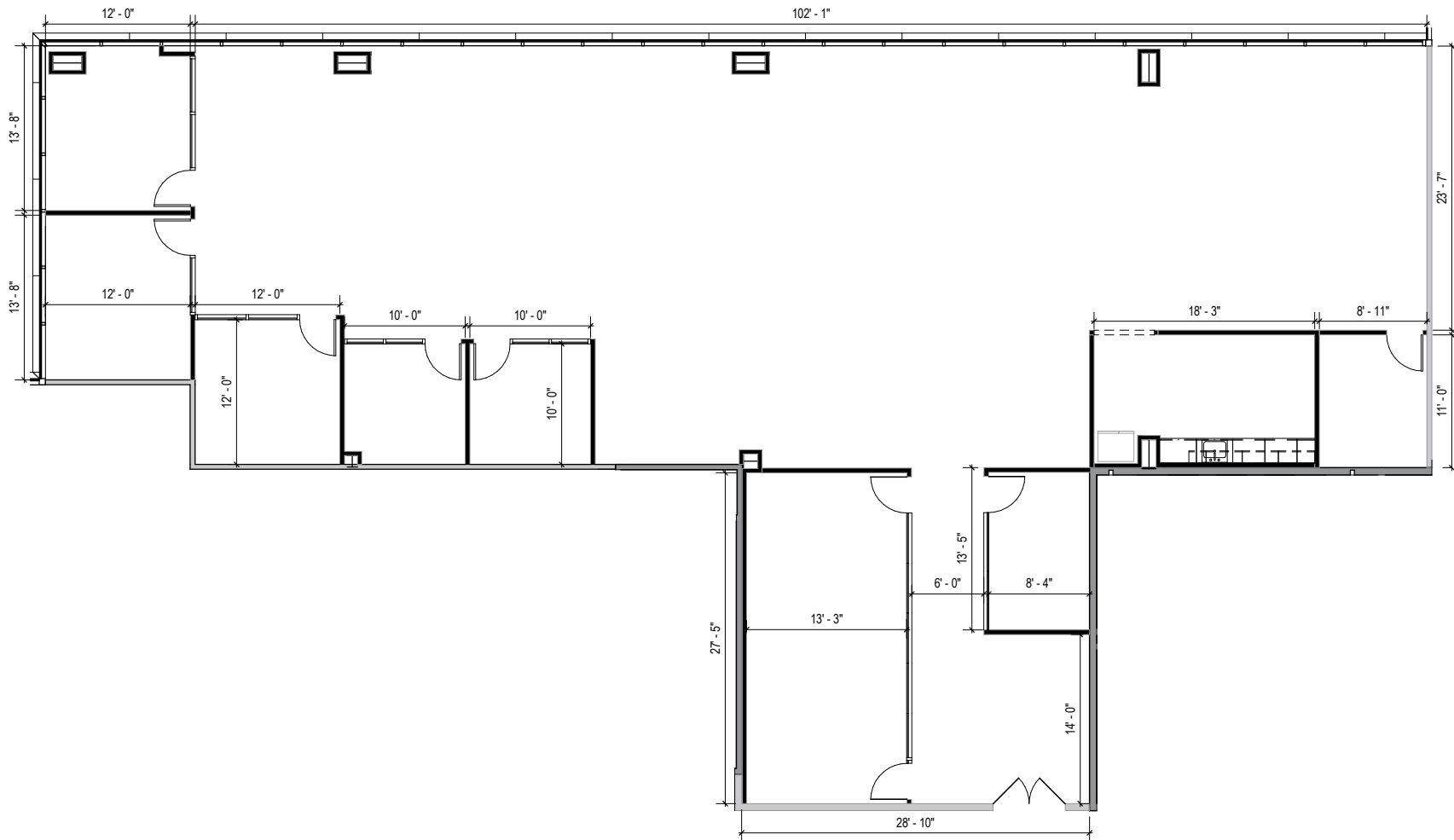
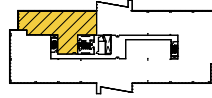
VALLEY GROVE

2100 W. Pleasant Grove Boulevard | Pleasant Grove, UT 84062

Suite 380 | Third Floor

TOTAL SF AVAILABLE:
5,420 SF

KEY PLAN
NOT TO SCALE





Grove Tower

2100 W Pleasant Grove Boulevard | Six-Story Class 'A' Office



GROVE TOWER

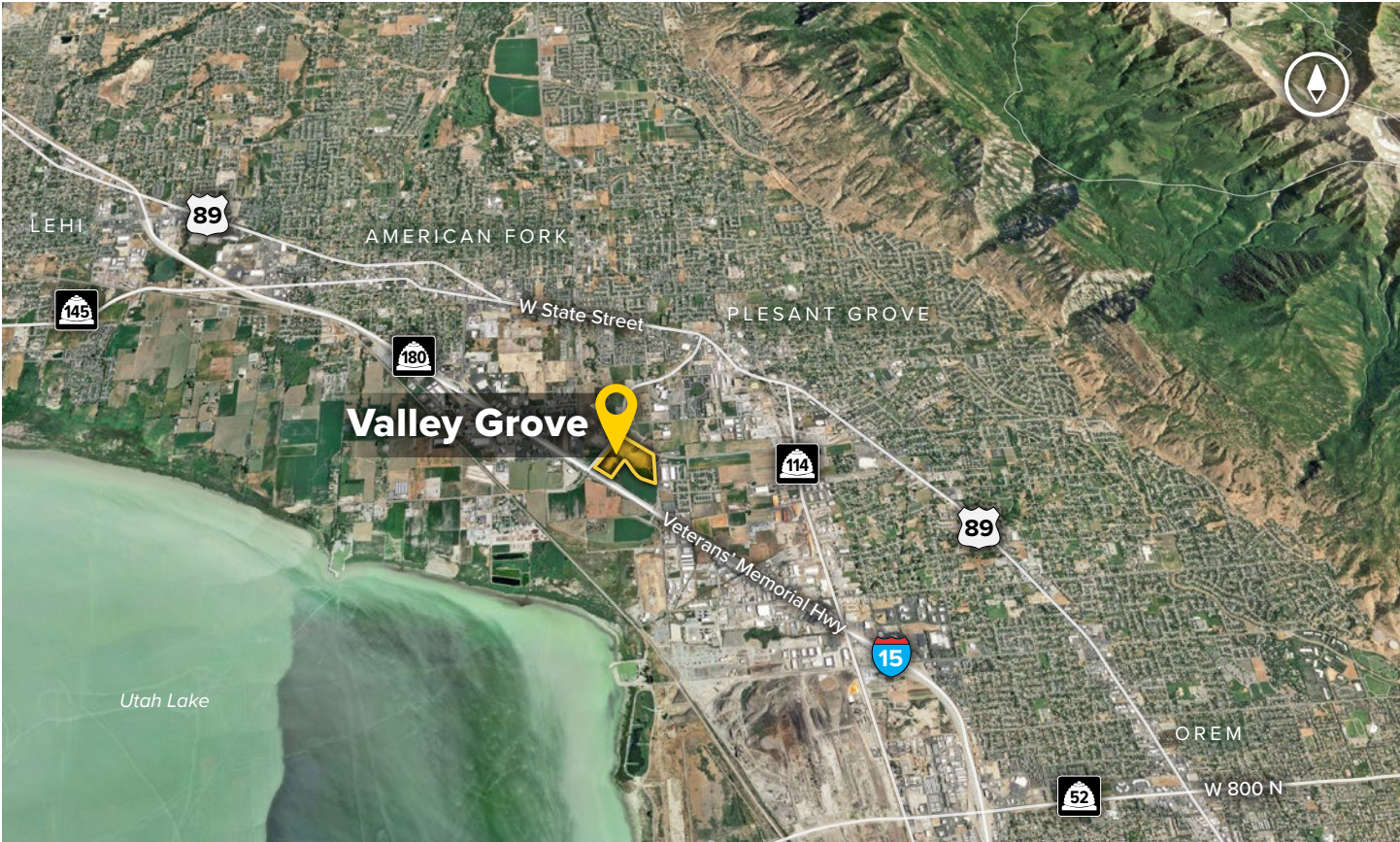
SIX-STORY OFFICE BUILDING

2100 W Pleasant Grove Blvd 189,393 SF

SIX-STORY OFFICE SPECIFICATIONS

LEED	Certified
Suite Sizes	2,500 up to 189,383 SF
Ceiling Height	10-13 ft. clear minimum
Offices	Built to suit
Parking	5.5 spaces per 1,000 SF





Distances to:

- I-215 25 miles
- Provo, UT 12 miles
- Salt Lake City, UT 34.5 miles
- Salt Lake City International Airport 38 miles

About St. John Properties

St. John Properties, Inc. is a full-service real estate company headquartered in Baltimore, Maryland. The company owns, manages and has developed more than 19 million square feet of commercial real estate, including office, flex/R&D, warehouse, retail and residential space.



**For additional leasing information
or to schedule a tour, contact:**

Daniel Thomas
Regional Partner, Utah
dthomas@sjpiutah.com
801.899.7991



1982 W Pleasant Grove Boulevard | Suite D
Pleasant Grove, Utah 84062

801.899.7991 | THEVALLEYGROVE.COM
MD | CO | LA | NV | PA | UT | VA | WI

This information contained in this publication has been obtained from sources believed to be reliable. St. John Properties makes no guarantee, warranty or representation about this information. Any projections, opinions, assumptions or estimates used here are for example only and do not represent the current or future performance of the property. Interested parties should conduct an independent investigation to determine whether the property suits their needs. REV 06/19

Connect with us @thevalleygrove  