

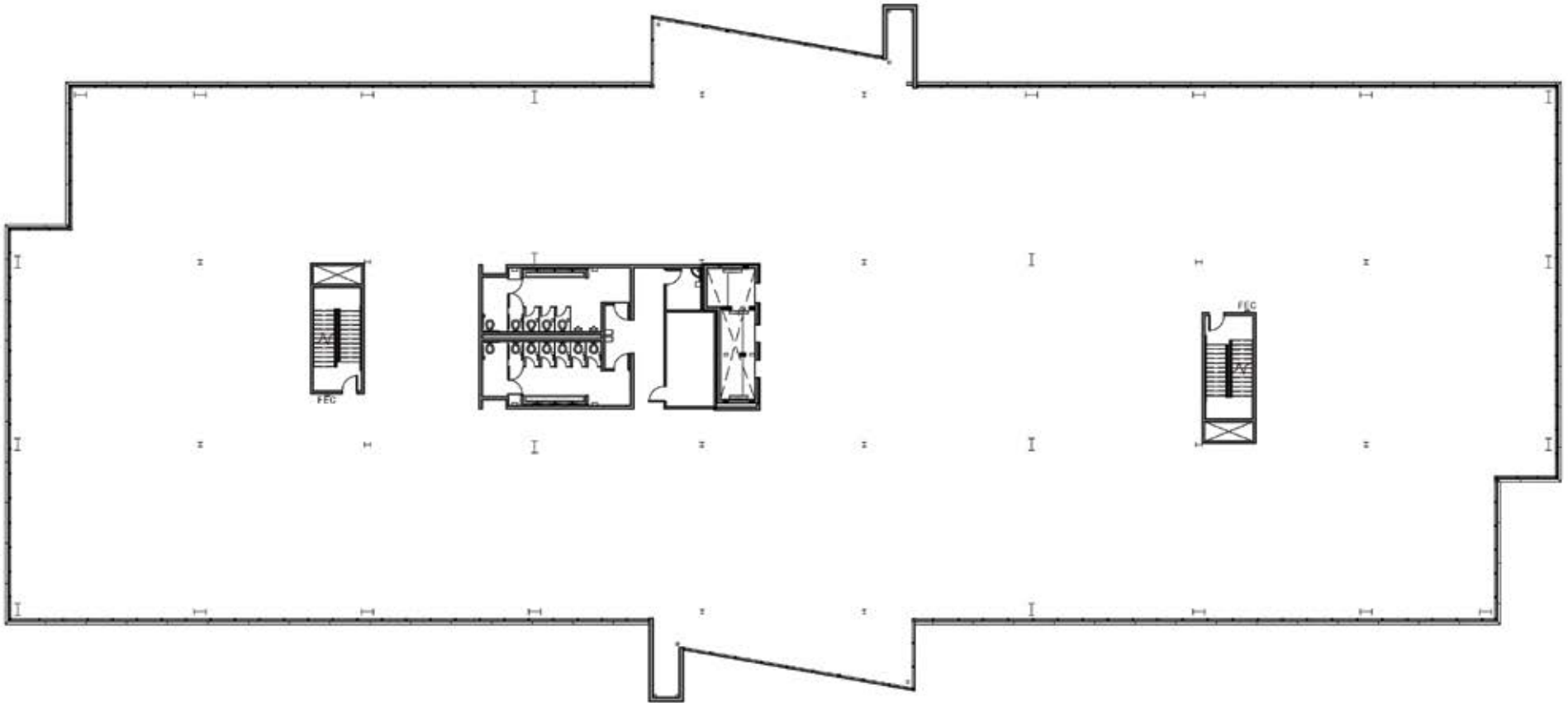
Valley Grove

Grove Tower | Pleasant Grove, UT 84062

2100 W. Pleasant Grove Boulevard | Suite 500 | Fifth Floor

Total SF Available:

32,798 SF





Grove Tower

2100 W Pleasant Grove Boulevard | Six-Story Class 'A' Office



Grove Tower

Six-Story Office Building

2100 W Pleasant Grove Blvd 189,383 SF

Six-Story Office Specifications

LEED	Certified
Suite Sizes	2,500 up to 189,383 SF
Ceiling Height	10-13 ft. clear minimum
Offices	Built to suit
Parking	5.5 spaces per 1,000 SF





Distances to:

- Interstate 215 25 miles
- Provo, UT 12 miles
- Salt Lake City, UT 34.5 miles
- Salt Lake City International Airport 38 miles

About St. John Properties

St. John Properties, Inc. is a full-service real estate company headquartered in Baltimore, Maryland. The company owns, manages and has developed more than 20 million square feet of commercial real estate, including office, flex/R&D, warehouse, retail and residential space.

For additional leasing information or to schedule a tour, contact:

Scott Gifford
Leasing Representative
 sgifford@sjpiutah.com
 801.899.7991

Daniel Thomas
Regional Partner, Utah
 dthomas@sjpiutah.com
 801.899.7991



1982 W Pleasant Grove Boulevard | Suite D
 Pleasant Grove, Utah 84062

801.899.7991 | THEVALLEYGROVE.COM
 MD | CO | LA | NV | PA | UT | VA | WI

Connect with us @thevalleygrove  



This information contained in this publication has been obtained from sources believed to be reliable. St. John Properties makes no guarantee, warranty or representation about this information. Any projections, opinions, assumptions or estimates used here are for example only and do not represent the current or future performance of the property. Interested parties should conduct an independent investigation to determine whether the property suits their needs. REV 03/20