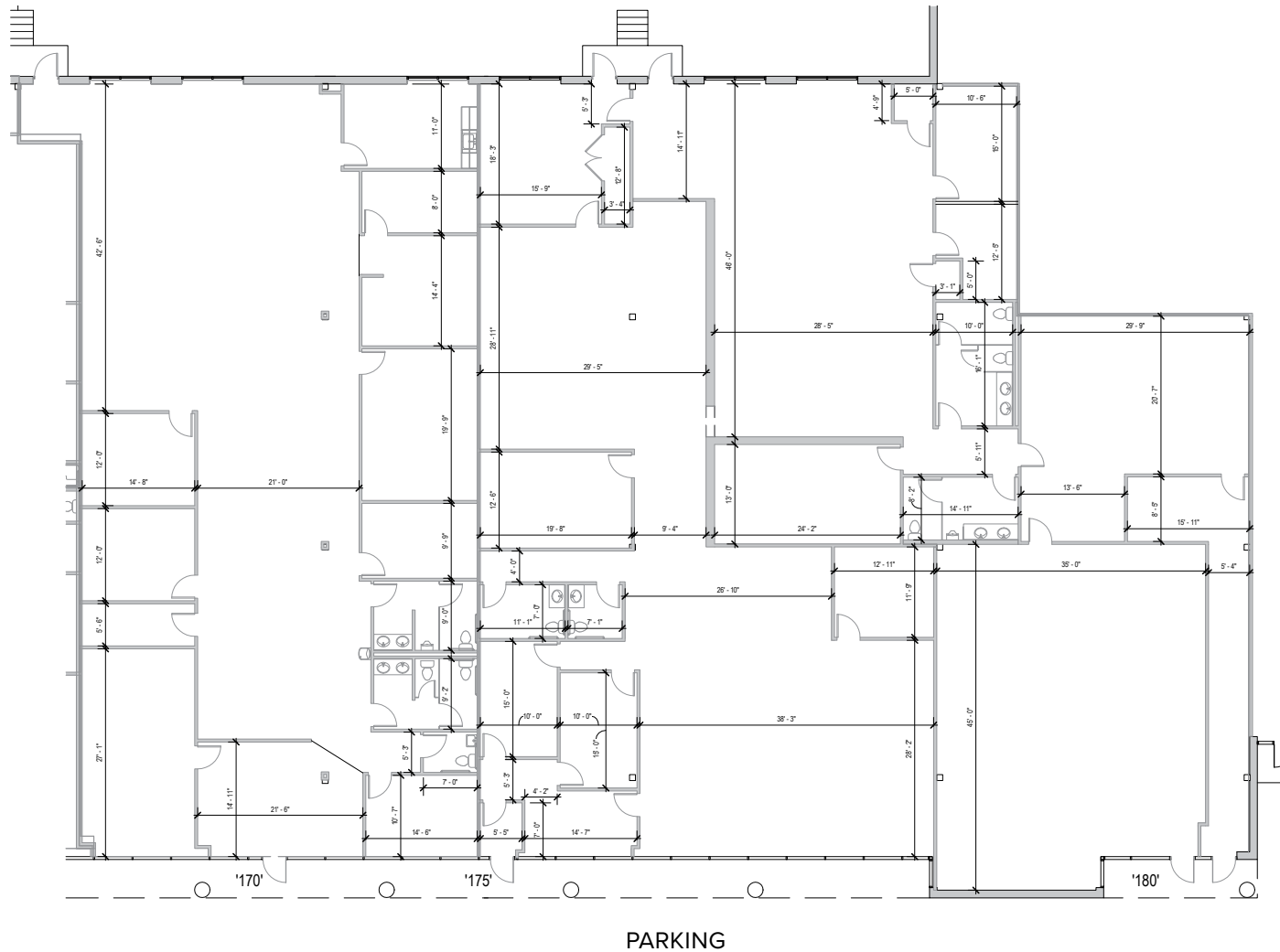


190 ADMIRAL COCHRANE DRIVE
Annapolis, MD 21401
Suites 170-180

TOTAL SF AVAILABLE:
15,434 SF

KEY PLAN
NOT TO SCALE





190 Admiral Cochrane Drive

Annapolis, MD 21401

190 Admiral Cochrane Drive is a single-story flex building located in Annapolis, Maryland. Strategically located in the sought after Riva Road corridor, the property benefits from tremendous access to the area's major roadways, and is in immediate proximity to a number of amenities including a day care and deli (located across the street).



FLEX/R&D SPACE

FLEX/R&D BUILDING

190 Admiral Cochrane Dr 71,827 SF

FLEX/R&D SPECIFICATIONS

Offices	Built to suit
Parking	4 spaces per 1,000 SF
Heat	Heat pump
Roof	EPDM rubber
Exterior Walls	Masonry
Loading	Dock
Zoning	W1





**190 Admiral
Cochrane Drive**

For more information on
190 Admiral Cochrane Drive, visit:
sjpi.com/admiralcochrane



About St. John Properties

St. John Properties, Inc. is a full-service real estate company headquartered in Baltimore, Maryland. The company owns, manages and has developed more than 19 million square feet of commercial real estate, including office, flex/R&D, warehouse, retail and residential space.



2560 Lord Baltimore Drive
Baltimore, MD 21244

410.788.0100 | SJPI.COM

MD | CO | LA | NV | PA | UT | VA | WI

**For additional leasing information
or to schedule a tour, contact:**

Stephanie Caronna
Leasing Representative
410.369.1235 | scaronna@sjpi.com

Sean Doordan
Senior VP, Leasing & Acquisitions
410.369.1211 | sdoordan@sjpi.com

Connect with us @[stjohnprop](https://twitter.com/stjohnprop)



This information contained in this publication has been obtained from sources believed to be reliable. St. John Properties makes no guarantee, warranty or representation about this information. Any projections, opinions, assumptions or estimates used here are for example only and do not represent the current or future performance of the property. Interested parties should conduct an independent investigation to determine whether the property suits their needs. REV 04/19