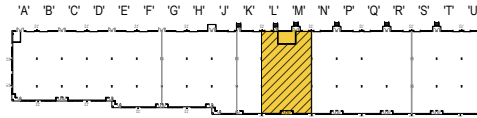
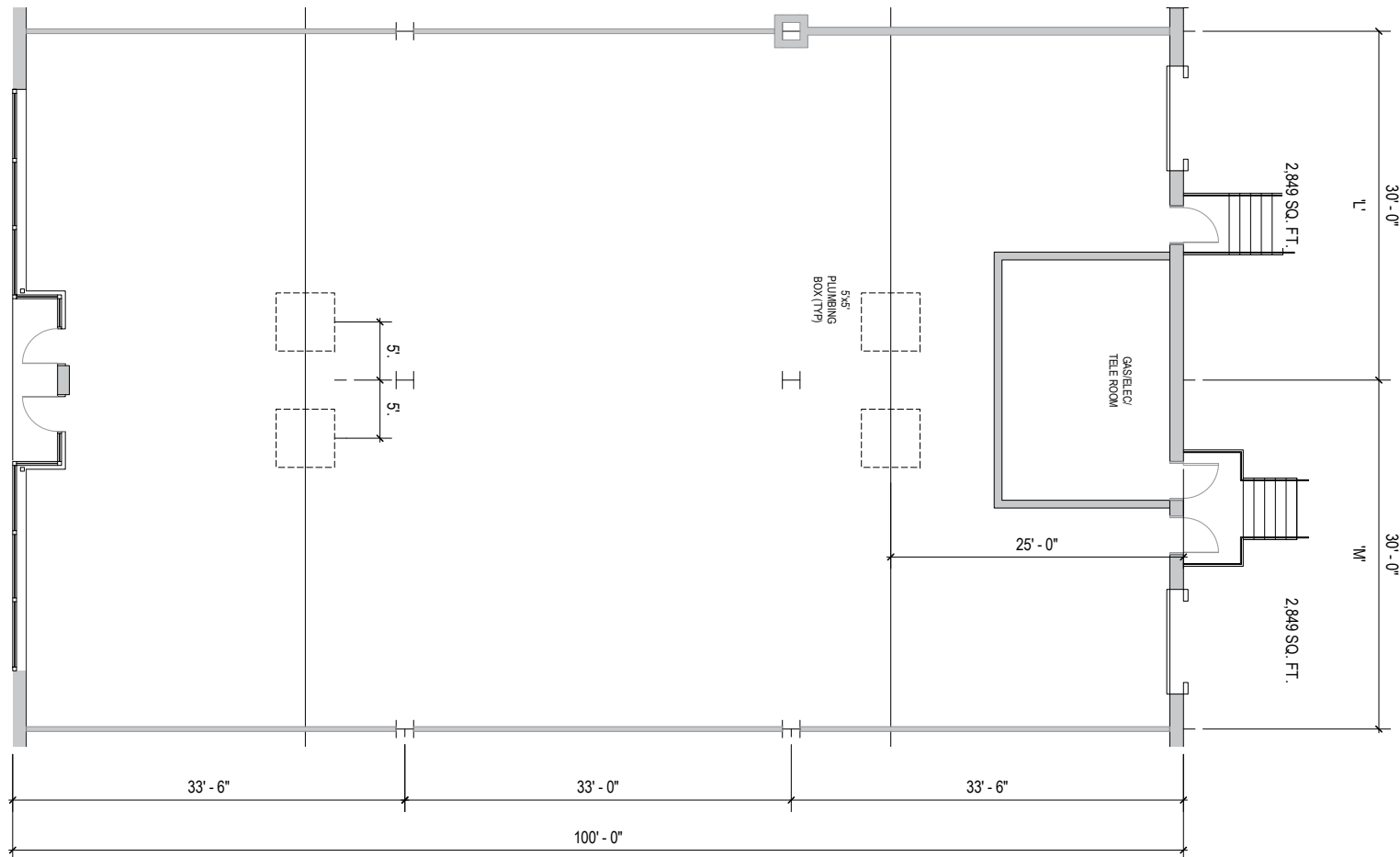


TOTAL SF AVAILABLE:
 2,849 - 5,698 SF

KEY PLAN
 NOT TO SCALE



NOTE: THIS SPACE PLAN IS SUBJECT TO EXISTING FIELD CONDITIONS. THIS DRAWING IS PROPRIETARY AND THE EXCLUSIVE PROPERTY OF ST. JOHN PROPERTIES, INC. ANY DUPLICATIONS, DISTRIBUTION, OR OTHER UNAUTHORIZED USE IS STRICTLY PROHIBITED.





FLEX / R&D SPACE

FLEX / R&D BUILDINGS

11600 Crossroads Circle	34,080 SF	
11605 Crossroads Circle	40,080 SF	
11615 Crossroads Circle	31,920 SF	
11620 Crossroads Circle	42,120 SF	
11630 Crossroads Circle	51,120 SF	LEED GOLD
11640 Crossroads Circle	50,400 SF	
11650 Crossroads Circle	28,000 SF	LEED GOLD
11655 Crossroads Circle	59,400 SF	LEED SILVER
11675 Crossroads Circle	40,080 SF	LEED GOLD DESIGNED
11685 Crossroads Circle	54,120 SF	LEED SILVER DESIGNED
11695 Crossroads Circle	33,120 SF	LEED SILVER DESIGNED
Building A	49,080 SF	FUTURE
Building B	36,120 SF	FUTURE
Building C	49,080 SF	FUTURE
Building D	48,120 SF	FUTURE
Building E	31,560 SF	FUTURE
Building F	42,120 SF	FUTURE
Building G	42,120 SF	FUTURE
Building H	28,560 SF	FUTURE
Building I	42,120 SF	FUTURE

FLEX / R&D SPECIFICATIONS

LEED (<i>select buildings</i>)	Core & Shell
Suite Sizes	2,520 - 59,400 SF
Ceiling Height	16 ft. clear minimum
Offices	Built to suit
Parking	4 spaces per 1,000 SF
Heat	Gas
Roof	EPDM or TPO
Exterior Walls	Brick on block
Loading	Dock or drive-in
Zoning	ML-IM-M43



Flex/R&D interior



Distances to:

- Aberdeen, MD 18 miles
- AMTRAK / MARC Station 1 mile
- BWI Airport 20 miles
- Baltimore (Downtown) 11 miles
- I-695 (Baltimore Beltway) 4 miles
- I-95 2 miles
- Martin State Airport 1 mile
- Towson, MD 10 miles



2560 Lord Baltimore Drive
 Baltimore, MD 21244
 410.788.0100 | SJPI.COM
 CO | MD | NV | PA | LA | UT | VA | WI

Follow us @stjohnprop   



About St. John Properties

St. John Properties, Inc. is a full-service real estate company headquartered in Baltimore, Maryland. The company owns, manages and has developed more than 18 million square feet of commercial real estate, including flex/R&D, warehouse, office and retail space.

For additional leasing information or to schedule a tour, contact:

OFFICE / FLEX SPACE
Matt Lenihan Assistant VP, Leasing
 410.369.1202 | mlenihan@sjpi.com

Richard Williamson
 SVP Leasing & Marketing
 410.369.1222 | rwilliamson@sjpi.com

RETAIL SPACE
Bill Holzman VP, Retail Leasing
 410.369.1240 | bholzman@sjpi.com

Brooke Harlander Leasing Agent
 410.369.1232 | bharlander@sjpi.com

This information contained in this publication has been obtained from sources believed to be reliable. St. John Properties makes no guarantee, warranty or representation about this information. Any projections, opinions, assumptions or estimates used here are for example only and do not represent the current or future performance of the property. Interested parties should conduct an independent investigation to determine whether the property suits their needs. REV 09/17