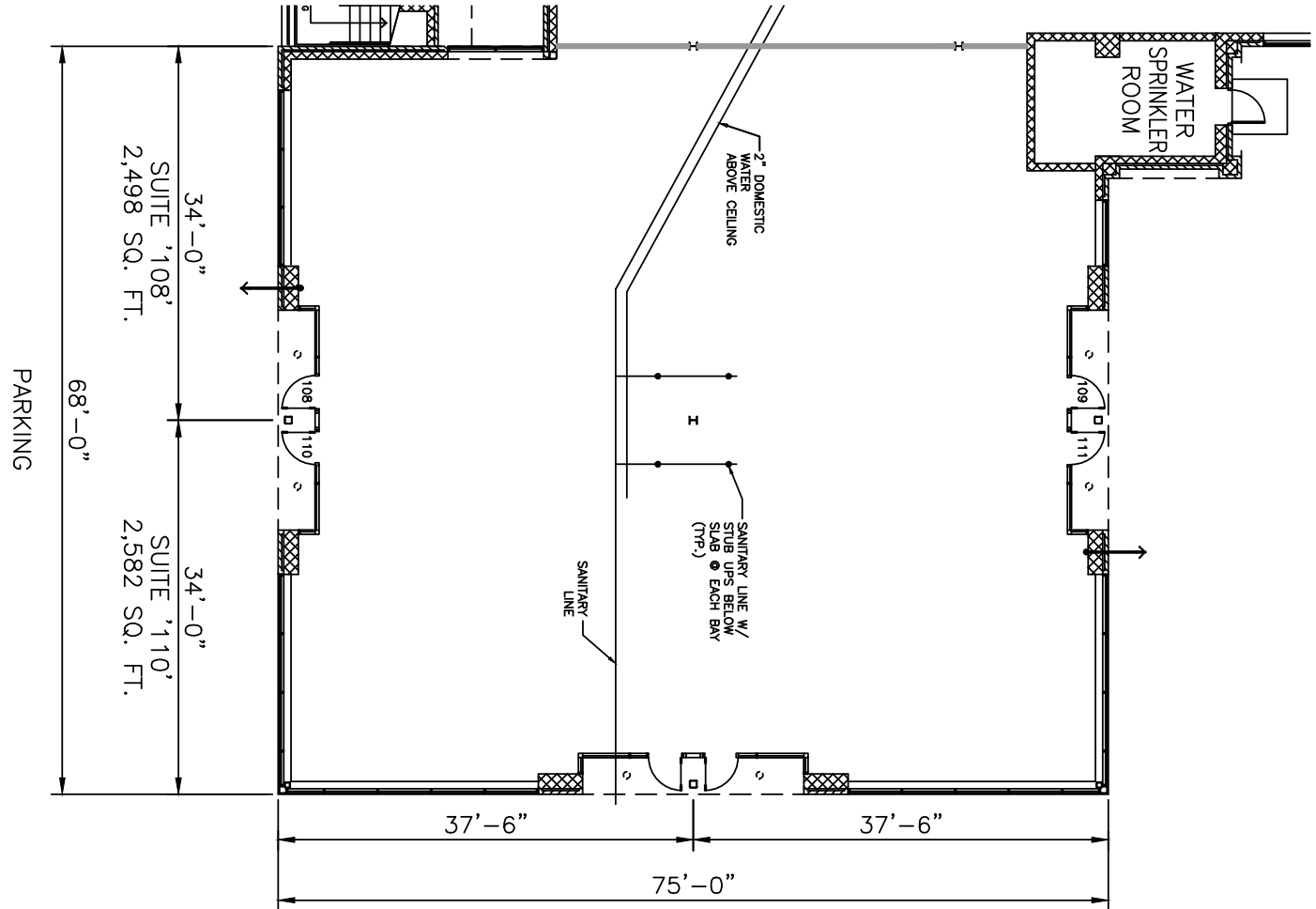
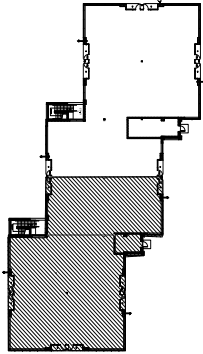


**TOTAL SF AVAILABLE:**  
 5,080 SF

**KEY PLAN**  
 NOT TO SCALE



NOTE: THIS SPACE PLAN IS SUBJECT TO EXISTING FIELD CONDITIONS. THIS DRAWING IS PROPRIETARY AND THE EXCLUSIVE PROPERTY OF ST. JOHN PROPERTIES, INC. ANY DUPLICATIONS, DISTRIBUTION, OR OTHER UNAUTHORIZED USE IS STRICTLY PROHIBITED.

## About Reisterstown Crossing

Reisterstown Crossing is a 10-acre mixed-use business community located on Westminster Pike near I-795, Butler Road and Main Street in historic Reisterstown in Baltimore County, Maryland.

The unified architecture of St. John Properties' planned two office buildings, comprising approximately 75,000 square feet of office space, and the 13,000 square foot retail component, will provide Reisterstown Office Park a campus-like business environment. Tenant sizes from 1,300 square feet to 30,600 square feet of space offer businesses straight-forward, economical and high-utility space in a covenant-protected, well-maintained atmosphere. Free, ample parking is available adjacent to the building.

The retail portion of Reisterstown Office Park supports nearly 13,000 square feet of space, with identified uses including business services, restaurants and other service retail and featuring frontage and roadside visibility from Westminster Pike (MD Route 140). St. John Properties features an in-house and fully-staffed property management division, to ensure that each building continually operates at peak performance.



## RETAIL SPACE

### RETAIL BUILDING

114 Westminster Pike      12,675 SF



## SINGLE-STORY OFFICE SPACE

### SINGLE-STORY OFFICE BUILDINGS

116 Westminster Pike      14,280 SF      **LEED GOLD**

### SINGLE-STORY OFFICE SPECIFICATIONS

LEED	Core & Shell
Suite Sizes	1,300 - 1,462 SF
Ceiling Height	9 ft. clear minimum
Offices	Built to suit
Parking	5 spaces per 1,000 SF
Heat	Gas
Roof	EPDM rubber
Exterior Walls	Brick on block
Zoning	BM



## TWO-STORY OFFICE SPACE

### TWO-STORY OFFICE BUILDINGS

118 Westminster Pike      30,600 SF      **LEED GOLD DESIGNED**

120 Westminster Pike      30,600 SF      **LEED GOLD DESIGNED**

### TWO-STORY OFFICE SPECIFICATIONS

LEED	Core & Shell
Suite Sizes	2,318 - 15,492 SF
Ceiling Height	10 ft. clear minimum
Offices	Built to suit
Parking	4 spaces per 1,000 SF
Zoning	BM





**Distances to:**

- Baltimore (Downtown)..... 18 miles
- BWI Airport..... 24 miles
- Hampstead, MD..... 10 miles
- Hanover, PA ..... 26 miles
- Interstate 695..... 9 miles
- Interstate 795 ..... 2 miles
- Manchester, MD..... 14 miles
- Owings Mills, MD..... 5 miles
- Westminster, MD..... 12 miles

2560 Lord Baltimore Drive  
 Baltimore, MD 21244  
 410.788.0100 | SJPI.COM  
 CO | MD | NV | PA | LA | UT | VA | WI

**About St. John Properties**

St. John Properties, Inc. is a full-service real estate company headquartered in Baltimore, Maryland. The company owns, manages and has developed nearly 18 million square feet of commercial real estate, including flex / R&D, warehouse, office and retail space.

**For additional leasing information or to schedule a tour, contact:**

**Will McCullough** *Leasing Agent*  
 410.369.1207 | [wmccullough@sjpi.com](mailto:wmccullough@sjpi.com)

**Richard Williamson** *SVP Leasing*  
 410.788.0100 | [rwilliamson@sjpi.com](mailto:rwilliamson@sjpi.com)



*Follow us on social media*  
**@stjohnprop**