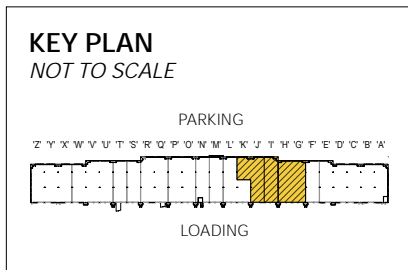


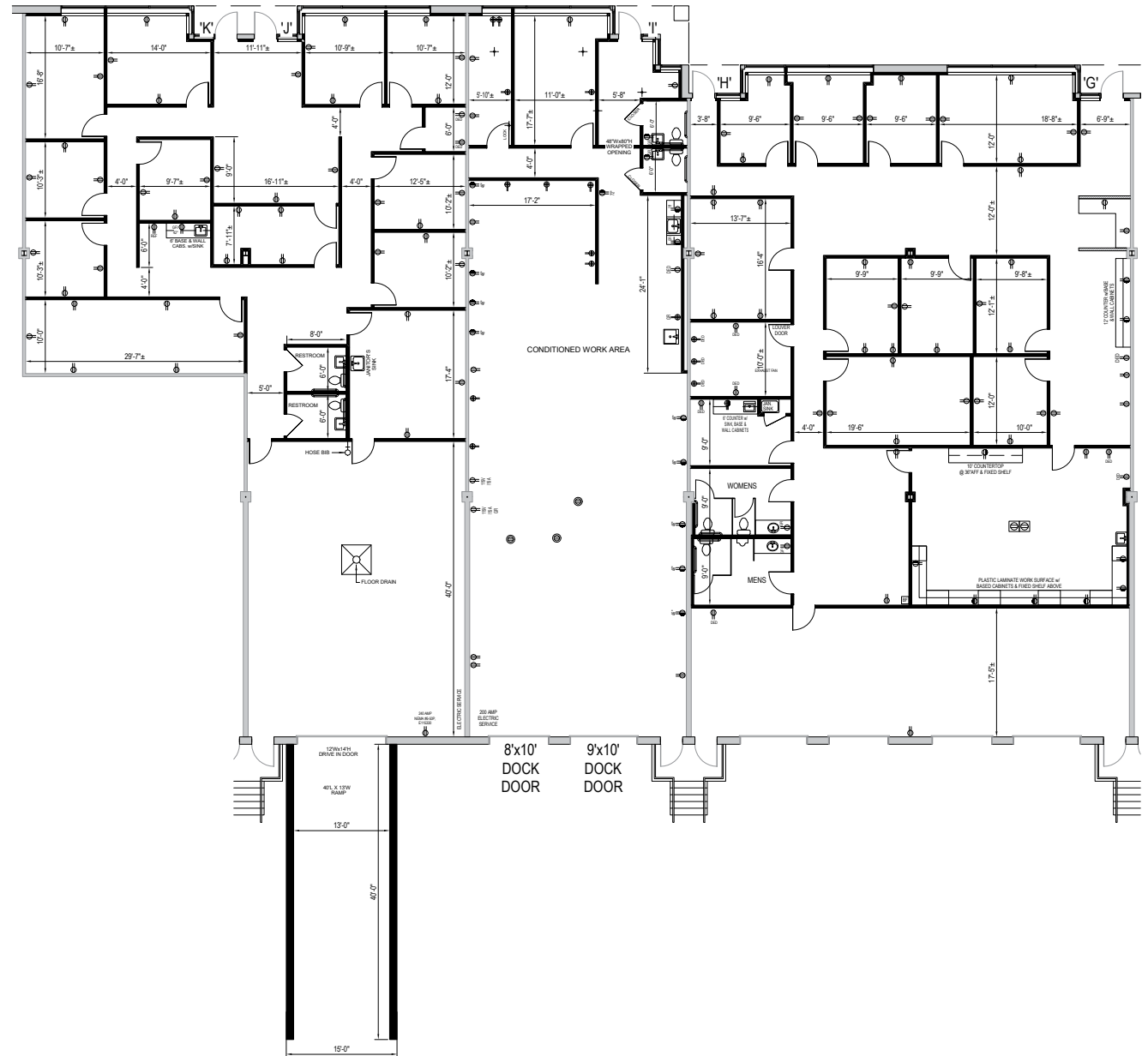


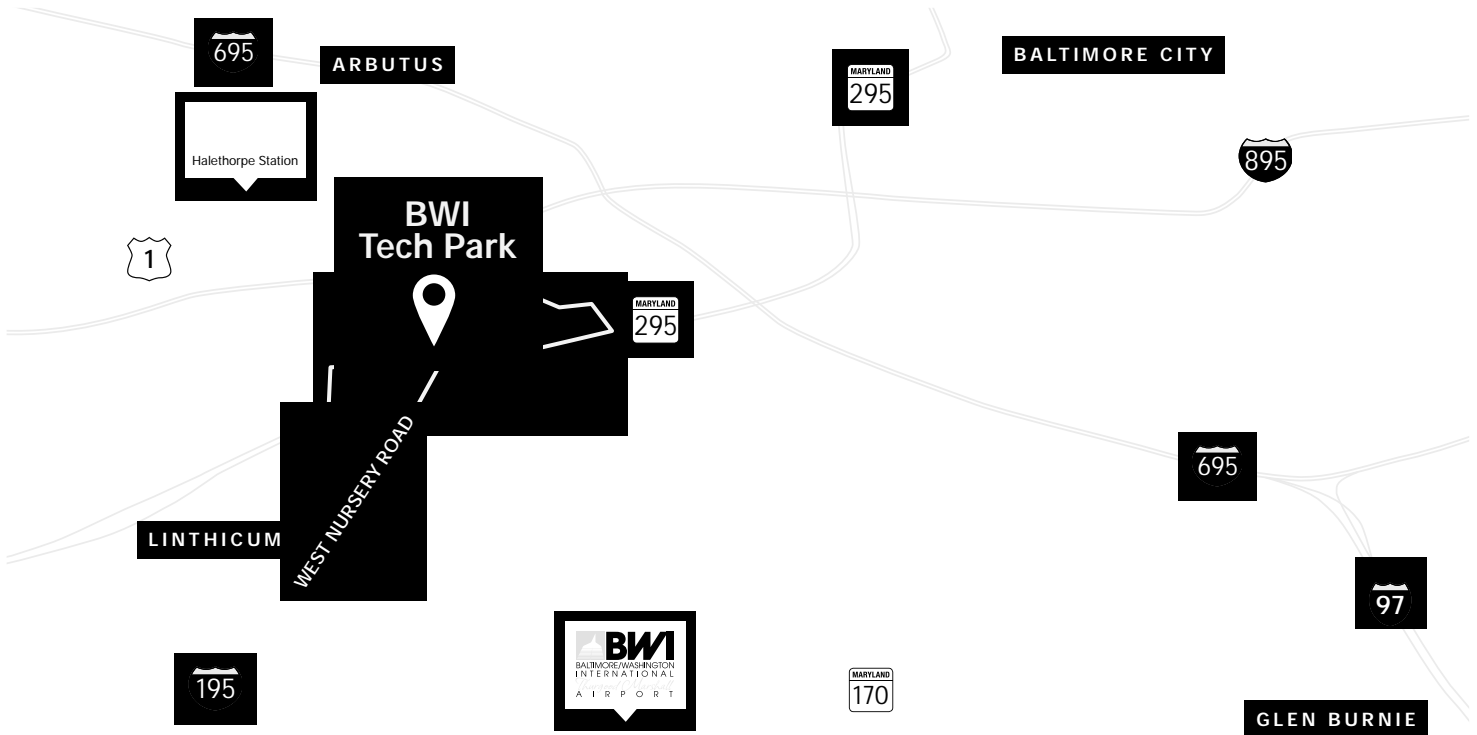
Total SF Available:
13,020 SF

7,868 sq. ft. of office, 6 dock doors,
drive-in with enlarged ramp



Note: This space plan is subject to existing field conditions. This drawing is proprietary and the exclusive property of St. John Properties, Inc. Any duplications, distribution, or other unauthorized use is strictly prohibited.





Distances to:

Annapolis, MD (Downtown)	22 miles
Arundel Mills Mall	4 miles
Baltimore, MD (Downtown)	8 miles
BWI Airport	2 miles
Columbia, MD.....	12 miles
Interstate 495 (Capital Beltway)	19 miles
Interstate 695 (Baltimore Beltway)	3 miles
MD 100	4 miles
MD 295	0.1 mile

Contact Us

For additional leasing information or to schedule a tour, contact:

OFFICE & FLEX/R&D SPACE:

Lacey Johansson
Leasing Representative
 ljohansson@sjpi.com
 410.369.1229

Matt Lenihan
Vice President, Leasing
 mlenihan@sjpi.com
 410.369.1202

RETAIL SPACE:

Eric Llewellyn
Retail Leasing Representative
 elllewellyn@sjpi.com
 443.369.1308

Bill Holzman
Vice President, Retail Leasing
 bholzman@sjpi.com
 410.369.1240

About St. John Properties
 St. John Properties, Inc. is a full-service real estate company headquartered in Baltimore, Maryland. The company owns, manages and has developed more than 22 million square feet of commercial real estate, including office, ex/R&D, warehouse, retail and residential space.

Connect with us @stjohnprop

[Twitter](#) [Facebook](#) [Instagram](#) [LinkedIn](#)




Corporate Headquarters:
 2560 Lord Baltimore Drive,
 Baltimore, MD 21244

410.788.0100 | SJPI.COM



This information contained in this publication has been obtained from sources believed to be reliable. St. John Properties makes no guarantee, warranty or representation about this information. Any projections, opinions, assumptions or estimates used here are for example only and do not represent the current or future performance of the property. Interested parties should conduct an independent investigation to determine whether the property suits their needs. REV 01/22