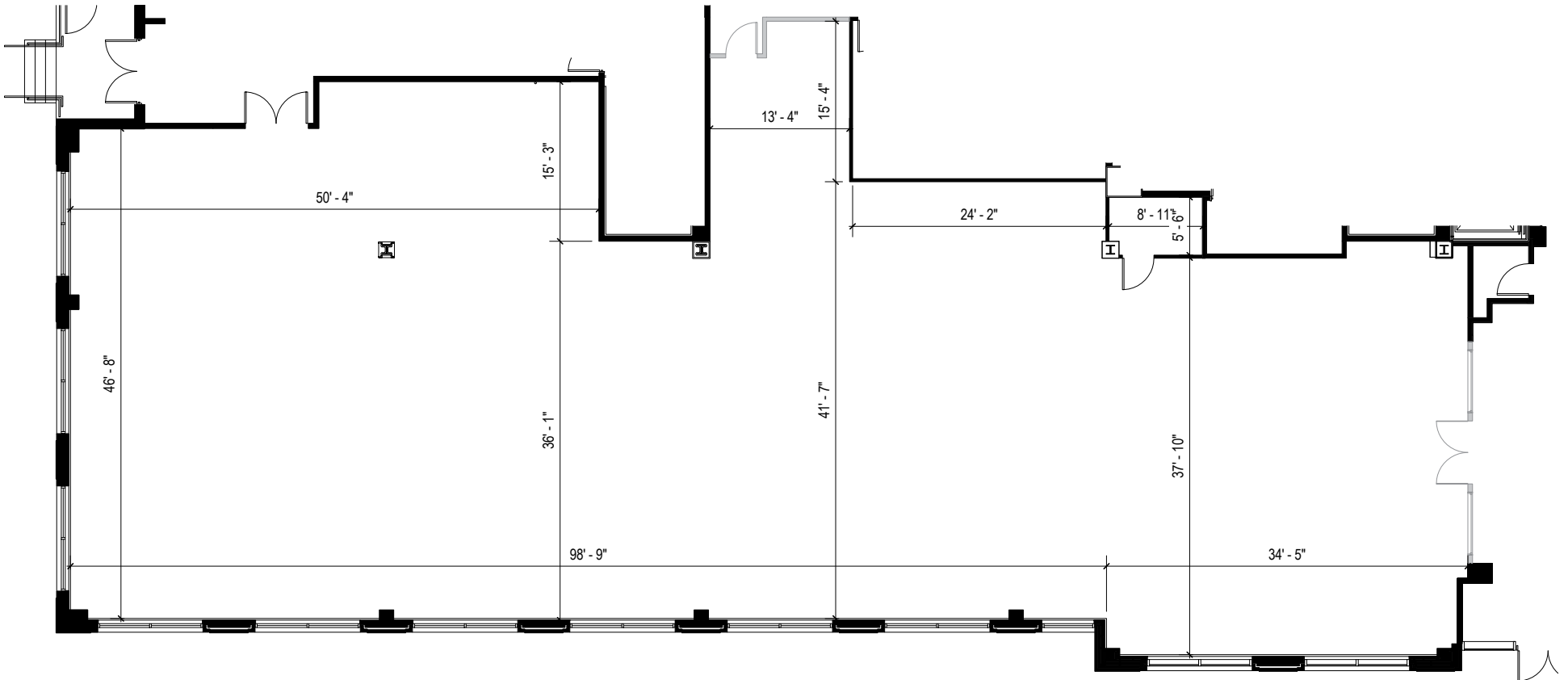
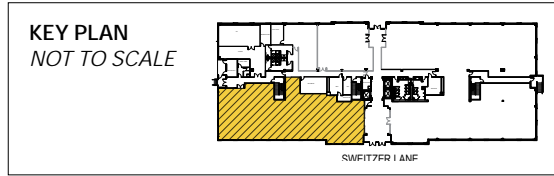
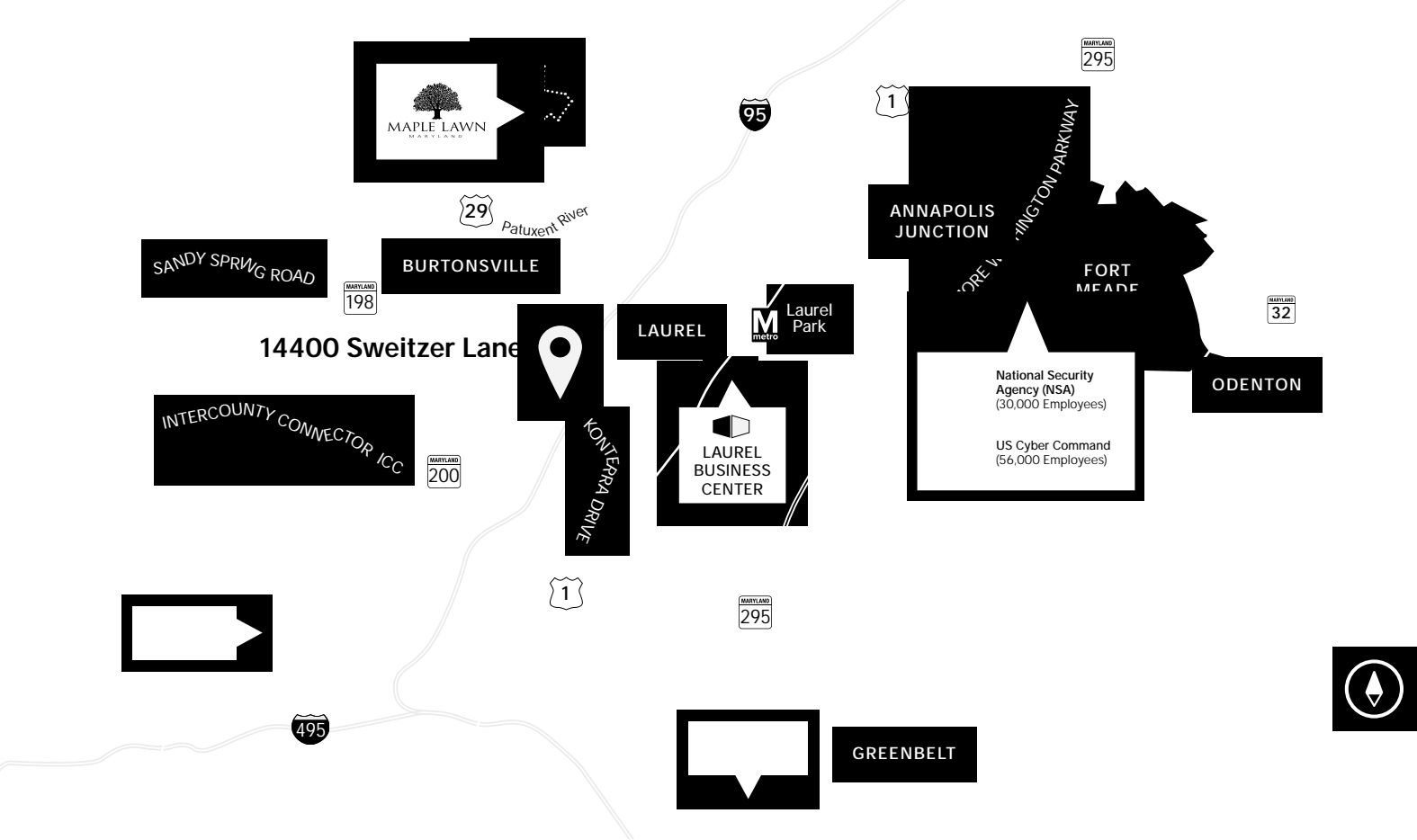


**Total SF Available:**  
6,918 SF







**Distances to:**

Baltimore, MD (Downtown) .....	23 miles
BWI Airport .....	20 miles
Columbia, MD .....	9 miles
Fort Meade/NSA .....	12 miles
Inter-county Connector (ICC)/MD 200 .....	4 miles
Interstate 95 .....	.5 mile
Interstate 495 .....	8 miles
Interstate 695 (Baltimore Beltway) .....	17 miles
Interstate 295 (B.W. Parkway) .....	5 miles
NASA Goddard .....	12 miles
Washington, D.C. ....	11 miles

**About St. John Properties**

St. John Properties, Inc. is a full-service real estate company headquartered in Baltimore, Maryland. The company owns, manages and has developed more than 21 million square feet of commercial real estate, including office, ex/R&D, warehouse, retail and residential space.







2560 Lord Baltimore Drive  
 Baltimore, MD 21244  
 410.788.0100 | SJPI.COM  
 MD | CO | LA | NV | PA | UT | VA | WI

For additional leasing information or to schedule a tour, contact:

**Matt Lenihan**  
*Vice President, Leasing*  
 410.369.1202 | mlenihan@sjpi.com

**Claire Cobert**  
*Leasing Representative*  
 410.369.1274 | ccobert@sjpi.com

Connect with us @stjohnprop    



*This information contained in this publication has been obtained from sources believed to be reliable. St. John Properties makes no guarantee, warranty or representation about this information. Any projections, opinions, assumptions or estimates used here are for example only and do not represent the current or future performance of the property. Interested parties should conduct an independent investigation to determine whether the property suits their needs. REV 12/20*