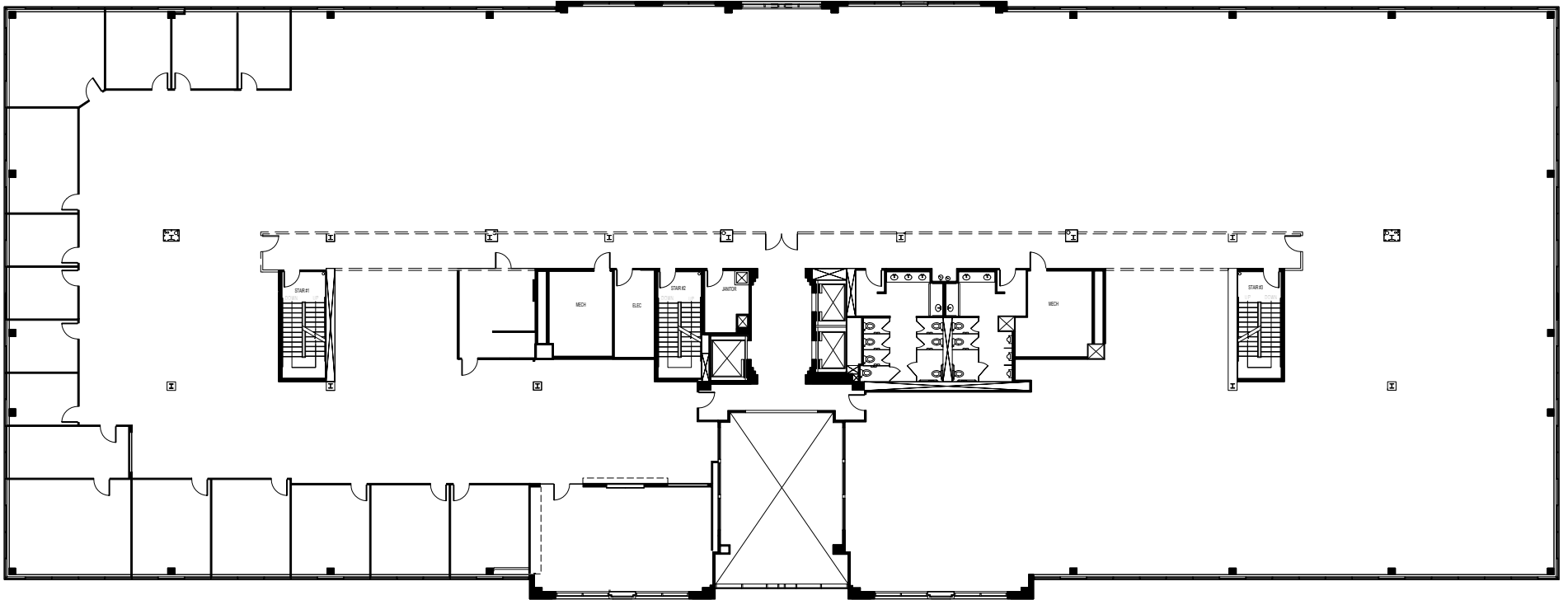
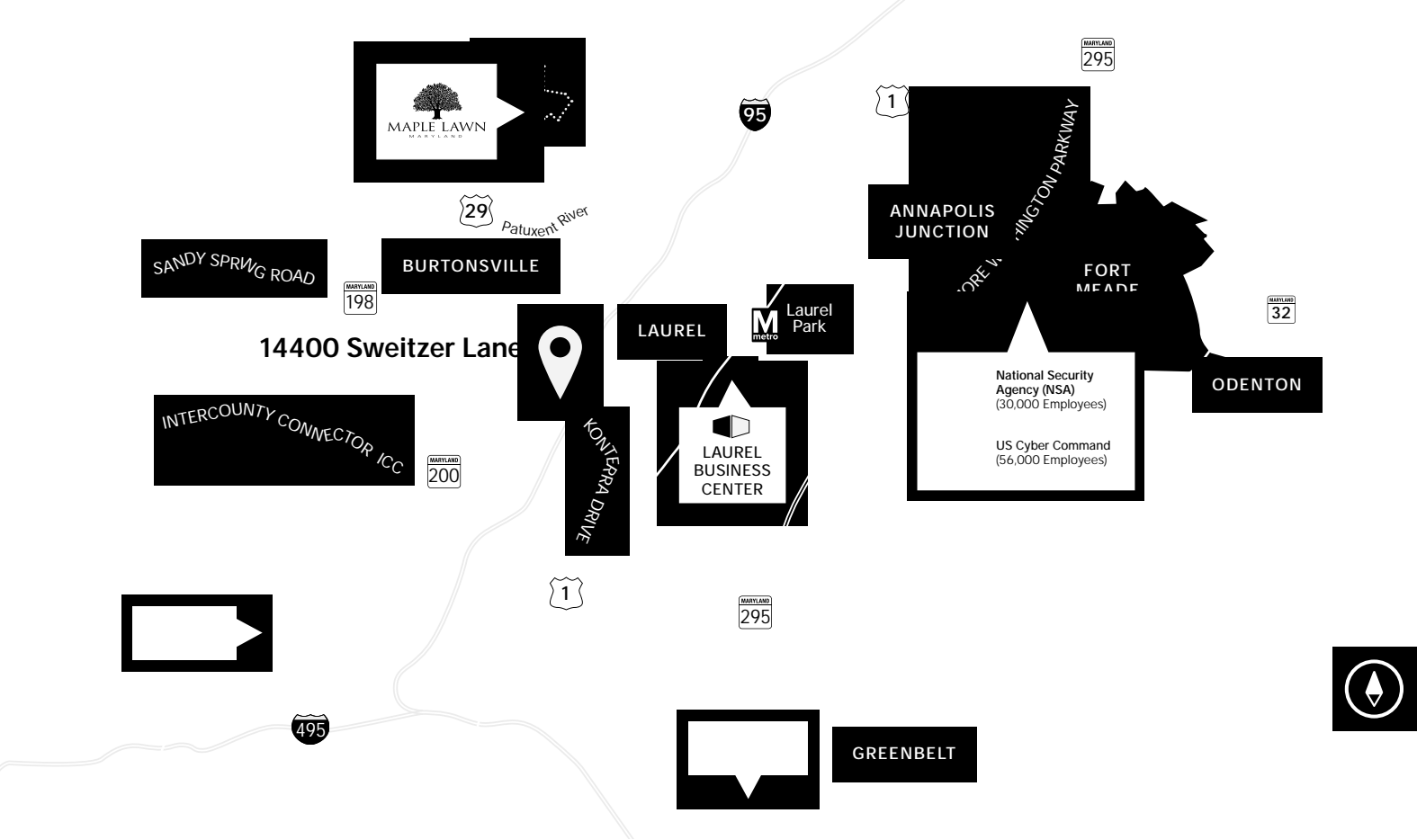


Total SF Available:
Up to 30,343 SF



SWEITZER LANE



Distances to:

Baltimore, MD (Downtown)	23 miles
BWI Airport	20 miles
Columbia, MD	9 miles
Fort Meade/NSA	12 miles
Inter-county Connector (ICC)/MD 200	4 miles
Interstate 955 mile
Interstate 495	8 miles
Interstate 695 (Baltimore Beltway)	17 miles
Interstate 295 (B.W. Parkway)	5 miles
NASA Goddard	12 miles
Washington, D.C.	11 miles

About St. John Properties

St. John Properties, Inc. is a full-service real estate company headquartered in Baltimore, Maryland. The company owns, manages and has developed more than 21 million square feet of commercial real estate, including office, ex/R&D, warehouse, retail and residential space.







2560 Lord Baltimore Drive
 Baltimore, MD 21244
 410.788.0100 | SJPI.COM
 MD | CO | LA | NV | PA | UT | VA | WI

For additional leasing information or to schedule a tour, contact:

Matt Lenihan
Vice President, Leasing
 410.369.1202 | mlenihan@sjpi.com

Claire Cobert
Leasing Representative
 410.369.1274 | ccobert@sjpi.com

Connect with us @stjohnprop    



This information contained in this publication has been obtained from sources believed to be reliable. St. John Properties makes no guarantee, warranty or representation about this information. Any projections, opinions, assumptions or estimates used here are for example only and do not represent the current or future performance of the property. Interested parties should conduct an independent investigation to determine whether the property suits their needs. REV 12/20